



PHILLIP ISLAND CAMERA CLUB Inc.

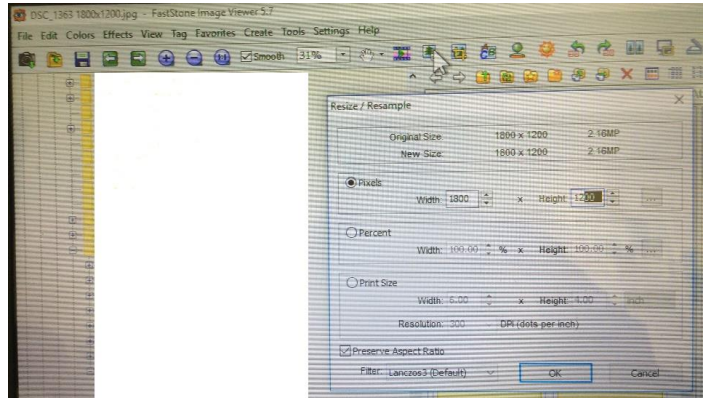
RESIZING IMAGES

FASTSTONE:

(Faststone is free to download)

After making final post-production alterations to image put a copy in a separate folder (This is to protect your original image).

- Open Faststone and go to your copied image and select it.
- Go to Resize/Resample and press left mouse button.
- Select Pixels
- Width 6000 Height 4000 (perhaps size of your image)
- Type into Height 1200 (The width will automatically change)
- Left mouse click on OK
- You can now save your re-sized image ready for entry into Club evaluations.

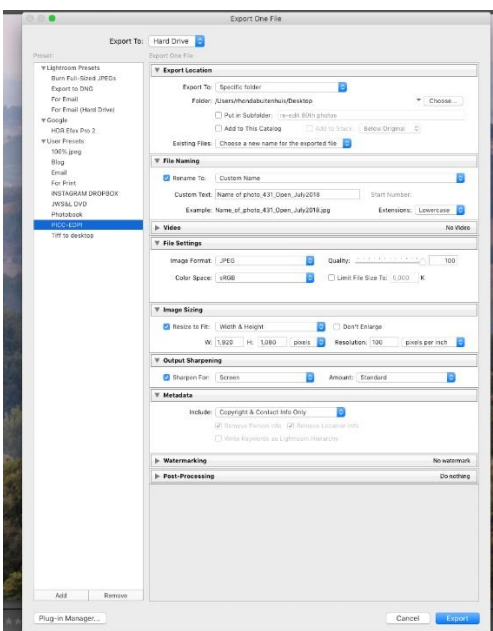


For a Panoramic Image type 1980 into Width and don't worry about height.

PHOTOSHOP ELEMENTS:

With image in Photoshop Elements,

- left mouse click on Image>Resize>Image Size (on the Menu Bar)
- With boxes ticked for Scale Styles, Constrain Proportions & Resample Image in Width and Height in pixels, type 1200 into Height. (Width will automatically adjust) left mouse click on OK.
- You are now ready to save your image. Don't forget to use a unique name so that your original image is not altered.
- (Once again in the instance of Panoramas change the width to 1920 pixels and let the Height automatically adjust.)



LIGHTROOM:

On good authority, the best way to export your images from Lightroom is from the Export Menu.

Fill in your Export box with sizes Height and Width and whatever else you want to save. Press ADD (bottom left) to make a preset, and then whenever you want to export with the 1920 Width 1200 Height you can just press on the preset.

Voila, it's that easy.