

PHILLIP ISLAND CAMERA CLUB INC: MARCH 2020

Incorporation No A0102960D



Meetings: 1st Monday of the month 1.30 - 4pm (Easter & Cup weekend exceptions)

Heritage Centre, Thompson Ave, Cowes

Website: <http://www.phillipislandcameraclub.com.au>

Club FB Page: <http://www.facebook.com/#!/groups/382689165127848>

CLUB FB Q & A: <https://www.facebook.com/groups/547546335848669/>

Enquiries: Susan 0408136717 – phillipislandcameraclub@gmail.com

NEXT MEETING:

The next meeting will be held on **Monday, 6th April, 2020, at 1:30 pm** at the Heritage Centre meeting room (near the library) 89 Thompson Avenue, Cowes.

COLOUR THEORY WORKSHOP:

Don't forget on **Monday, 23rd March, 2020**, from 1-4 pm at Newhaven Yacht Squadron Clubrooms, we shall be running a workshop on Colour Theory. You will need camera and tripod and solid colour props in primary and secondary colours – fruit, vases, cups, glassware, scarves or backdrops etc.

CALENDAR FOR THE YEAR

The following is a list of the proposed dates for Camera Club functions so that you can pencil them into your diary.

Date	Function	Date	Function
Mar 23rd 1-4 pm	Colour Theory Workshop Newhaven Yacht Club	Aug 3rd	PICC Meeting 1:30 pm
April 6th	PICC Meeting 1:30 pm	Sept 1st	Wywurri Protea Farm
April 20th 9am	Coal Creek Excursion	Sept 7th	PICC Meeting 1:30 pm
May 4th	PICC Meeting 1:30 pm	Sept 13th Sunday	PI Running Festival
June 1st	PICC Meeting 1:30 pm	Oct 5th	PICC Meeting 1:30 pm
June 26th- 28th	VAPS Convention Wangaratta	Nov 9th	PICC Meeting 1:30 pm
July 13th *NB	PICC Meeting 1:30 pm	Dec 7th	PICC Meeting 1:30 pm

***NB Meeting Room was booked and unavailable for the first Monday.**

VAPS CONFERENCE (Victorian Association of Photographic Societies):

VAPS holds an annual Convention every year where members of different clubs come together to learn more about photography. There are presentations by guest speakers, workshops and photographic excursions to participate in and of course interaction with members from other clubs. It is a great forum for exchanging ideas about the activities of other clubs.

Features of the Conventions include:

- Presentations by guest speakers who may be professional photographers or who may work in allied professions
- Workshops and outdoor location photo shoots conducted by experienced photographers
- The annual VAPS Interclub Competition
- Saturday evening Annual dinner and Friday evening pre-convention social event

- Presentation of awards for both years of service to one or more clubs, and for service to the photography movement in Victoria
- The Convention Booklet, which includes the following information:
 - Details of the Convention program
 - Profiles of the lecturers and judges
 - Recipients of VAPS year bars
 - Winners of the Interclub Competition
 - Details of the Interclub Competition entries

The 2020 convention will be held in Wangaratta on the last weekend in June – 26-28th June 2020.

Go to the web-site for further information :- <https://www.vaps.org.au/index.php/convention>

Bookings need to be made to reserve your position on presentations if you intend to attend, as well as booking accommodation.

NOVICE CATEGORY REINSTATED:

To encourage new members to participate in the monthly evaluation, it has been decided to re-instate a NOVICE section. This will be in the EDPI (Electronic Digital Projected Image (I think I've got that right.)) format. We would like to emphasise that this is not a competition but a learning opportunity. If you need assistance to get started please speak to one of the Committee Members, who are only too happy to help.

Label your entries NOV_(Title)_(PICC Number)_Topic_Month2020

MANAGEMENT COMMITTEE:

For any inquiries, questions, suggestions or concerns, please feel free to contact a committee member as listed below with their contact numbers.

Susan Brereton (Co-ordinator)	0408 136 717	Gary Parnell	0418 323 674
Lynne Cook (Secretary- Newsletter)	0400 386 792	Renee Sterling	0408 483 119
Kathryn Shadbolt (Treasurer)	0432 147 935	Jenny Sierakowski	0408 355 130
Brenda Berry	0419 512 380	Gillian Armstrong	0404 528 338

INVERLOCH EXHIBITION

Three of our members entered in the Inverloch Exhibition held over the Labour Day Weekend, with Kathryn Shadbolt receiving an Honourable Mention for "Fantasy Flowers" and Rhonda Buitenhuis selling a canvas.

A NEW MEMBER:

We have a new financial member, Frank Zulian, joined our membership. We look forward to Frank's participation in Club activities. Please make him feel welcome.

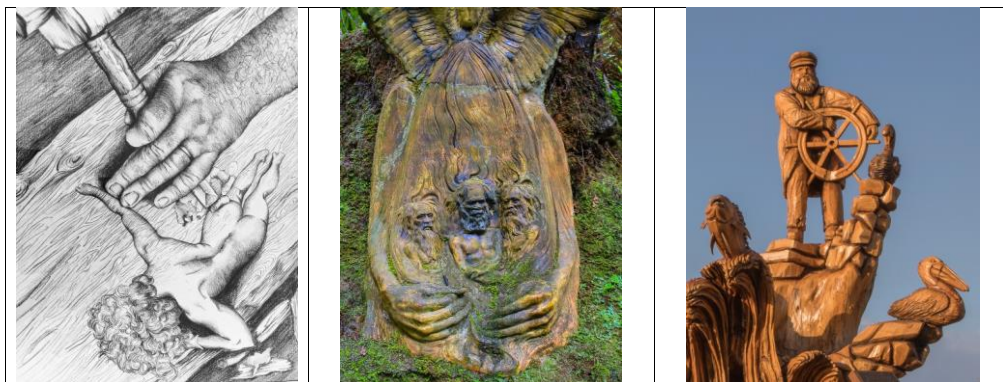
THIS MONTH'S CHALLENGE – Industrial

We offer these extra challenges to give you new ideas and to keep you on the move with your photography, making sure you don't have a "photography freeze".

Please limit your amount of images to five only, name them including your Club **Membership Number** and put them in a folder called "Challenge" and bring them along on a USB stick to the meeting or send them by email Friday before the meeting to phillipislandcameraclub@gmail.com

LAST MONTH'S CHALLENGE – Carving

Below are several images from the Water Droplet Challenge



ANNUAL CHALLENGE - FOOD

Susan has set us the monthly challenge of FOOD. You can submit them monthly but please label them –

(Your PICC Number)_(Month)_(Title)_Food Challenge eg **326_01_Cheese Board_Food Challenge** or save them up and submit them in November for a slide-show in December.

WORKING WITH CHILDREN POLICE CHECK:

As a photography group we are quite often asked to record activities or promote photography at schools, which include children and if we haven't had a Police Check as individuals we can't really assist. We therefore encourage you all to do the police check. An application form needs to be filled out online at <http://www.workingwithchildren.vic.gov.au/home/applications/apply+for+a+check/>

Followed by a photograph at a Post Office. As volunteers there is no charge. Please let one of the Management Committee know when you receive your check.

WEB-SITE GALLERY:

Have you checked out the gallery on our web-site. Highly Commended and Commended Images are being included each month thanks to Gary Parnell. You can find it at <http://www.phillipislandcameraclub.com.au/galleries/>

QUESTION/MENTOR BOX:

We shall be having a question/mentor box for people to put any photography question/s or suggestions in that they wish to learn about or need help with. Perhaps a workshop or excursion that they would like to do.

Gary Parnell has taken the initiative to open up a Facebook closed group for PICC members to ask questions and get answers.

You can find it at - <https://www.facebook.com/groups/547546335848669/>

FACEBOOK CHALLENGES

Don't know about you, but I had a holiday from putting things on Facebook over the Festive Season, but now we are back again ready and roaring to go. Here are Rob's challenges for the next two months. We'd love to see your images.

March 1st Wharves & Piers
8th Abandon

15th Solitude
22nd Twilight
29th Movement

EVALUATION RESULTS – February Open

Mary Mullane, currently a member of Caulfield Photographic Society, was the evaluator for this month. She was a founding and Committee member of the Australian Photographic Judges Association and received a 25 year VAPS bar in 2018. Her photographic interests include old cars, travel, landscape, architecture, pinhole and black and white while her two great loves are cycling and photography.

There were eleven prints and forty-three EDPIs for evaluation. Well done everyone.

Mary awarded the following Highly Commended and Commended awards:-

(Her comments and suggestions for improvement are at the end of the newsletter)

PRINTS	TITLE	PHOTOGRAPHER
Highly Commended	Evening Light Petra Jordan	Trent Smith
Highly Commended	Quite Remarkable	Rhonda Buitenhuis
Highly Commended	Coloured Stones	Will Hurst
Highly Commended	Nature's Sculpture	Jenny Skewes
Highly Commended	Newly Found Stonehenge	Will Hurst
Commended	Big Fish Little Fish	Kathryn Shadbolt
Commended	Norfolk Island Stone Wall	Brenda Berry
Commended	Sandstone Wall	Kathryn Shadbolt
Commended	Windjana Gorge	Rhonda Buitenhuis
Commended	A Stone Bed	Jenny Skewes
EDPIs		
Highly Commended	Gem Stones	Colleen Johnston
Highly Commended	Lined Up	Jenny Sierakowski
Highly Commended	Mt Augustus	Brenda Berry
Highly Commended	Rock Buns	Phyllis Brereton
Highly Commended	Smooth	David Cook
Highly Commended	Split	Rhonda Buitenhuis
Highly Commended	Stone Path	Brenda Berry
Highly Commended	Stone Reflections	Susan Brereton
Highly Commended	Stone Wharf	Brenda Berry
Highly Commended	Tunnel Creek	Rhonda Buitenhuis
Highly Commended	Uxmal	Jenny Sierakowski
Commended	Ballarat Grave Stones	Renee Sterling
Commended	Blue Stone	Susan Brereton
Commended	Bluey	David Cook
Commended	Criss Crossed	Joanne Linton
Commended	Gorge Rocks Beechworth	Kathryn Shadbolt

Commended	House of Stone	Jenny Skewes
Commended	Lapis Lazulli	Colleen Johnston
Commended	Old Stone Fountain	Phyllis Brereton
Commended	Orc	Jenny Sierakowski
Commended	Pavers	Jenny Sierakowski
Commended	Reach for the Sky	Joanne Linton
Commended	Remarkable Rocks	Jenny Skewes
Commended	Rock Garden 3	Vanessa Church
Commended	Rock Garden 4	Vanessa Church
Commended	Rocky Field	Phyllis Brereton
Commended	Sand and Stones	Joanne Linton
Commended	Sandstone Plinth	Lynne Cook
Commended	Stony Outcrop	Joanne Linton
Commended	Together Again	Renee Sterling
Commended	Washed Up	David Cook



PRINT HIGHLY COMMENDED
Evening Light Petra Jordon
Trent Smith



PRINT HIGHLY COMMENDED
Quite Remarkable
Rhonda Buitenhuis



PRINT HIGHLY COMMENDED
Coloured Stones
Will Hurst



PRINT HIGHLY COMMENDED
Newly Found Stonehenge
Will Hurst



EDPI HIGHLY COMMENDED



Lined Up
Jenny Sierakowski

EDPI HIGHLY COMMENDED
Mt Augustus
Brenda Berry



EDPI HIGHLY COMMENDED
Rock Buns
Phyllis Brereton

EDPI HIGHLY COMMENDED
Smooth
Dave Cook



EDPI HIGHLY COMMENDED
Split
Rhonda Buitenhuis

EDPI HIGHLY COMMENDED
Stone Path
Brenda Berry

Commented [LC2]:

Commented [LC1]:



EDPI HIGHLY COMMENDED
Stone Reflection
 Susan Brereton



EDPI HIGHLY COMMENDED
Stone Wharf
 Brenda Berry



EDPI HIGHLY COMMENDED
Tunnel Creek
 Rhonda Buitenhuis



EDPI HIGHLY COMMENDED
Uxmal
 Jenny Sierakowski



EDPI HIGHLY COMMENDED
Gem Stones
 Colleen Johnston



EDPI COMMENDED
House of Stone
 Jenny Skewes

2020 TOPICS FOR EVALUATION:

TOPIC 2020	SUBMISSION DATE	EVALUATION DATE
Open	Mar 2nd	Apr 6th
Artificial Light	Apr 6th	May 4th
Open	May 4th	June 1st
Landscape B&W	June 1st	July 13th
Open	July 13th	Aug 3rd

Home Turf	Aug 3rd	Sept 7th
Open	Sept 7th	Oct 5th
Less is More	Oct 5th	Nov 9th
Portfolio	Nov 9th	Dec 7th

TOPICS , DEFINITIONS and REFERENCE MATERIAL 2020

This information in full has been sent out separately. It is available in full on the web-site at –

<http://www.phillipislandcameraclub.com.au/competitions/2013-piccc-club-competition-topics/>

DIGITAL IMAGES (EDPI):

- Images may either be created with a digital camera or created with a conventional camera and scanned into electronic format.
- Images may be enhanced or manipulated using image editing software, but the original image must have been made by the entrant.
- As per VAPS specifications (www.vaps.org.au), maximum horizontal dimension is 1920 pixels and the maximum vertical dimension is 1080 pixels.
- Each image file must be in sRGB JPEG format and a maximum of up to 5 Mb in size (5000kb).

Name your data image with Title of photo and your Club member number, separated by an underscore, followed by the topic & date eg: **Sunset on Woolamai Beach_126_Open_July2018**. Bring these specially named images on a memory stick to the meeting for transfer to a Club CD to be given to the judge.

PRINTS:

- Prints may be ANY size, up to a maximum of 40cm x 50cm (16in x 20in) when mounted.
- ALL prints MUST be mounted.
- Panoramic print formats are acceptable, but must fit on a 40cm x 50cm (16in x 20in) board.
- Prints mounted to a total thickness greater than 5mm will not be accepted.
- Please also include a digital image of the photo on the memory stick you bring to the meeting labelled as for the EDPI, but starting with **PRINT: e.g. PRINT_Sunset on Woolamai Beach_126_Open_July2018**

NEWSLETTER ITEMS If you have anything to contribute to the Newsletter please send them to Lynne Cook at chinook@waterfront.net.au. Thanks to everyone who contributed so promptly. Help make this informative for everyone.

LUNCH ANYONE?

Extend your social time sharing with other members having lunch before the monthly meeting. ***12pm at the 'Mad Cowes', The Esplanade, Cowes.

***Hope to see you there – usually down the back



Judge's comments follow



Phillip Island Monthly Club Competition – Judge Feedback for “Stones” March 2020

Please refer to Judge Instruction Letter for ratings: **HC**(Highly Commended) - **C**(Commended) **Judge Mary Mullane**

Sequence by Title	Member No	Title	Judge Rating	PRINTS
1	851	Evening Light Petra Jordon	HC	Wow, a lot of detail, texture & form, B & W suits the subject & lighting is superb.
2	431	Quite Remarkable	HC	This photo shows "The Full Set", including the foreground is a positive, no distractions & enough background to give context, but minimised at the same time.
3	601	Big Fish Little Fish	C	KI rocks again, you do get a sense of scale in this photo, the sepia tones work well, & help to minimise distractions, good texture in rocks.
4	447	Coloured Stones	HC	Lovely light, with no harsh shadows, very sharp & detailed, & vibrant colour, with lots of impact all through, no sense of scale here.
5	641	Norfolk Island Stone Wall	C	Good use of framing in the photo, yet still emphasizing the details in the wall, has a "painterly" effect to it, but the lighting is flat, & the bright green is a distraction, maybe better in B & W.
6	399	Nature's Sculpture	HC	Interesting, I like it in B & W, simple, great textures & great lighting helps to give it a 3rd dimension.
7	601	Sandstone Wall	C	Warm tones, & bell adds interest, but does not dominate, no distractions, however, lighting is a bit flat.
8	361	Stone Collection		A nice arrangement of stones on a neutral & complementary background, however, the light looks "muddy" & the focal plane is narrow, so those towards the rear are not sharp, I think it needs a flash with a white reflector to bounce some light onto them, as well as perhaps using a different lens or composition, so that all are in focus.
9	447	Newly Found Stonehenge	HC	Clever concept, although not the entire Stonehenge, even if this is a set up/composite photo, it is something different, so well done.
10	431	Windjana Gorge	C	Good composition & colour, & the people to the left provide scale, I like the way your eye is led around photo.

11	399	A Stone Bed	C	I actually thought the "bed" looks a bit like a fish, I like how the surrounds put it in context, the girl does not look relaxed or comfortable as you would on a bed, though.
----	-----	-------------	---	--

Phillip Island Monthly Club Competition – Judge Feedback for March 2020				
“Stones” EDPIs (Judge) Mary Mullane				
Please refer to Judge Instruction Letter for ratings: - HC (Highly Commended) - C (Commended)				
Sequence by Title	Member No	Title	Judge Rating	EDPIs
1	850	Ballarat Grave Stones	C	Very ghostly image, which is accentuated by the photo being in B & W, as well as the graininess of the image, the composition is good with the different sizes & types providing interest.
2	315	Blue Stone	C	An unusual angle of a bluestone bridge, is it supposed to be shown as a vertical or horizontal format (it defaulted to horizontal when I opened it), however, my eye wants it to be vertical, yet it is more striking as a horizontal, anyway, great texture & detail as a B & W.
3	325	Bluey	C	Well seen, the pebbles in the crevices contrast nicely with the rocks in the foreground & background, the lighting is even, & it is sharp all through.
4	487	Criss Crossed	C	Good form & texture, the subject fills the frame, yet the surrounding rocks also provide context, as they are different.
5	326	Dry Stone Wall		Whilst including the house & other surroundings to emphasise the location of the wall, & perhaps its incongruity, I think there are too much surroundings & not enough wall, you could move around to the right & photograph it more front on, yet still provide context, the light on the wall itself is nice & warm, & helps to bring out the colour.
6	325	Flash Do		The foliage surrounding the rock almost looks like hair, the title of this puzzles me a bit, & the lighting is quite flat, even though it is warm, composition is OK, but I do think it needs something to add more interest.
	361			Showing the finished product, along with the raw material, suggests a form of advertising or commercial type of photography, & this aspect has been well handled, no distractions, a neutral background, & the

7		Gem Stones	HC	lighting is excellent with no harsh shadows or highlights.
8	601	Gorge Rocks Beechworth	C	Another good subject for B & W, fairly sharp & detailed all through, & nicely framed by the trees at the top, lots of texture in rocks.
9	399	House of Stone	C	Looks a pretty windswept place, so the choice of stone as a building material here is probably a good choice, & this photo illustrates it well, I do find that the blue gate draws your eye away from the stonework, however.
10	361	Lapis Lazulli	C	Similar to Gem Stones, & by the same photographer, however, the background is not as clean as the other photo. I would caution against entering 2 (or more) inherently similar photos in the 1 competition, however, as you are then competing against yourself, as well as the other entrants, & there will inevitably be comparisons made between the similar photos.
11	770	Lined Up	HC	Which way is up ? I like this, & it would also look good in B & W, quite symmetrical, but the stones are at different angles to provide interest, sharp & great light
12	641	Mt Augustus	HC	Good detail of a very small part, it almost looks like brickwork, well done for seeing something different, & choosing to focus on it, rather than the "standard" viewpoint.
13	314	Old Stone Fountain	C	Another photo that shows the fountain in its context, it could almost be the Leaning Tower of "...", well framed by the foliage, & the bright lighting is not too harsh.
14	770	Orc	C	A bit of a mystery about this photo - is the foliage in the crevice growing there, or has it just been washed in ?, the shiny light on the rocks suggests that it is wet, but it may not be, so a lot to have you guessing, & no hint of its actual context.
15	770	Pavers	C	Subdued lighting, & nice curves leading you through the photo, with just the triangle to break up the pattern of the stones.
	487			A very stark & hot looking photo, accentuated by the yellow sky, & the outline

16		Reach for the Sky	C	around the rocks to make them stand out, I would crop just a little off the left, where you can see some of the natural background, without the outline. If you are going to embellish a photo, watch out for "little things" like this, that may not be entirely obvious.
17	399	Remarkable Rocks	C	This is the "standard view" that nearly everyone takes, good contrasting colour & detail in the main rock, but less so in the foreground, due to the time of day.
18	314	Rock Buns	HC	Well done to get detail in the dark areas of the photo, without too much glare & reflection from the water within, in such bright lighting, the curve leads you nicely in & around the photo, but it is a pity that the top is cut off.
19	861	Rock Garden 1		I would suggest that the rocks are not the main subject in this photo, but rather the garden, whilst getting down low has helped to illustrate the contrast between the very dark rock, & the "garden", neither the rock in the foreground, nor the right side, is sharp enough.
20	861	Rock Garden 2		Whilst this photo is fundamentally different from the previous photo by the same photographer, it is also not sharp enough, it needs to be taken with a different lens or to move back slightly, so that it is in focus.
21	861	Rock Garden 3	C	This is better, again by getting down low, you can see the contrast between the rocks & the water, & the reflections add interest, watch the right side, though, where the water leads your eye straight out of the photo.
22	861	Rock Garden 4	C	The foliage provides a good colour contrast with the warm tones & size of the rock, it also provides a base for the rock, but the colour is such that it does not dominate the photo.
23	314	Rocky Field	C	This looks like the area between Lancefield & Tooborac, which has always fascinated me with its rocky landscapes. Whilst central, the cow provides context, I would have moved just a little to the right, to remove the distraction of the yellow canola field in the background, which draws my eye, otherwise, the photo has fairly even tones & subtle colour all through.

24	487	Sand and Stones	C	The jumble of different stones, sizes & textures leads you nicely through the photo, & this would also probably look good in B & W, it does look like you have used Unsharp Mask on some of the rocks, though, as they do look a bit unnatural - don't overdo it!
25	326	Sand Stone Plinth	C	Another photograph that puts the stones in context, good contrast in the sky, & detail in sand & stones, the person also does not dominate, I think I would've covered up the graffiti in the left foreground with some sand though, as it does distract.
26	325	Smooth	HC	Well done to photograph the rock pool with no reflections, distractions or ripples!, the water has the effect of magnifying what's underneath, the diagonal composition is good, & I like the touch of greenery in the bottom right, also the light has been well handled,
27	431	Split	HC	Subject fills frame, & the split is helpfully diagonal across the photo, the sky & the grass in the foreground are a good contrast, & help to give it some depth, good texture in the rocks.
28	315	Stone Bridge		I think this would be better in B & W to enhance the texture of the bridge, as it is not inherently very colourful, & the murky water doesn't help, I also don't like the foliage in the left foreground.
29		Stone Fruit		This seems to be stretching the topic definition just a little, yes, I know they are "stones", however, they should probably be classed as "seeds", & hence do not fit the definition. There is nothing wrong with the photo per se, however, you MUST adhere to a competition's definitions, or the entry will be excluded.
30	641	Stone Path	HC	I like the low angle of this photo, & the diagonals, the subtle lighting emphasises the textures very well.
31	315	Stone Reflection	HC	This would also look good in B & W, it has an almost kalidoscopic look to it, is mysterious, & is quite symmetrical, good texture in the rocks & no distractions.

32	641	Stone Wharf	HC	An interesting application of a white vignette to a photo - unusual, which really concentrates you eye on the rock texture, there is nothing to identify it as a wharf, but this works well in B & W.
33	850	Stone on the Beach		Good contrast with the sand, although the harsh shadow & bright lighting suggest that it was taken sometime around the middle of the day, so it does lack the 3rd dimension & is flat, it may've worked better if you had got down low & photographed it from the side.
34	850	Stones for Sontag		Whilst I understand the arrangement of stones, leaf, feather & flower, on what is (presumably), a gravestone, I think this would work better in landscape format, so we could see more of the context of the photo.
35	487	Stony Outcrop	C	Even lighting & lots of detail in the rocks, no distractions & sharp all over, the sky colour does tend to complement the rust of the rocks.
36	326	The Stone Collector		The rock that the child is sitting on is quite interesting, however, the child competes with the rock for your interest, & so is a distraction, it would be better to focus on the features of the rock by zooming in closer for better detail.
37	850	Together Again	C	A photo most suited to B & W, however, the composition could be improved, I would crop out the left side & the partial gravestone with the writing, as well as some of the tree on the right side, as the gravestones are only a small part of the overall photo, having said that, there is a great range of B & W tones in the photo, but you need to get in closer to make the gravestones the focal point, & not just a small part.
38	431	Tunnel Creek	HC	The people in the foreground provide scale, pity about the bright light in the cave, as otherwise, it is well lit & highlights the fantastic features in the rock.
39	326	Turned to Stone		Augusta WA, nice colour, however, composition could be improved, move around to the right, so that the poles at the top left are excluded, as well as the man to the left, so we can see more of the waterwheel itself.

40	770	Uxmal	HC	Well framed by the unusually shaped entrance, & the warm light helps to illuminate the stone detail on the sides, again we get an idea of scale from the people in the background, good composition.
41	325	Wah Up	C	Quite brightly lit, I like the fact that the subject fills the frame with the low angle, the contrasting colours are good, but the lighting is flat, & there are some areas around the centre that aren't quite sharp enough.
42	601	Whale Rock		For once, I would say that this is NOT a good subject for B & W, as I don't think there is enough separation in tones between the water & the rock, except where there is white foam, the texture of the rock & water all tend to blend together, & I think this would be better if it was in colour, as it is unlikely that the water & the rock would be the same colour, it is sharp & detailed otherwise.
43	315	Stone House		This photo is a bit busy with all the foliage surrounding, the colour is subtle & there is detail in the stones, however, I would have cropped some of the bottom off & tried to include the apex of the roof, rather than cut it off, as that would add more to the photo than the foreground.