

PHILLIP ISLAND CAMERA CLUB INC: APRIL 2021



Meetings: 1st Monday of the month 1.30 - 4pm (Easter & Cup weekend exceptions)

Website: <http://www.phillipislandcameraclub.com.au>

Club FB Page: <http://www.facebook.com/#!/groups/382689165127848>

Enquiries: Jenny – phillipislandcameraclub@gmail.com

CALENDAR FOR THE YEAR

The following is a list of the proposed dates for Camera Club functions so that you can pencil them into your diary.

Date	Function	Date	Function
Mon, May 3rd, 2021	PICC Meeting @ 1:30 pm Newhaven Yacht Clubrooms	28th Aug- 24th Oct, 2021	Ballarat Biennale
Thurs,, May 13th, 2021	10am Excursion – Wild Food Farm, 30 Rhyll/Newhaven Road, Rhyll Conservation Hill later.	Mon, Sept 6th, 2021	PICC Meeting @ 1:30 pm Newhaven Yacht Clubrooms
Saturday, 15th May 2021	Warragul Photography Exhibition (Proposed excursion to be confirmed)	Mon, Oct 4th, 2021	PICC Meeting @ 1:30 pm Newhaven Yacht Clubrooms
Mon, June 7th, 2021	PICC Meeting @ 1:30 pm Newhaven Yacht Clubrooms	18th-21st Oct, 2021	Over-night excursion to “Cedar & Stone”, Porcupine Ridge
Mon, July 5th, 2021	PICC Meeting @ 1:30 pm Newhaven Yacht Clubrooms	Mon, Nov 8th, 2021	PICC Meeting @ 1:30 pm Newhaven Yacht Clubrooms
Mon, Aug 2nd, 2021	PICC Meeting @ 1:30 pm Newhaven Yacht Clubrooms	Mon, Dec 6th, 2021	PICC Meeting @ 1:30 pm Newhaven Yacht Clubrooms

2021 Syllabus

Month Due	Topic	Challenge
May	Open	Bokeh
June	Black and White	Bubbles
July	Open	Juxtaposition
August	Tell a story	Macro
September	Open	Night Photography
October	Around the bend /corner	Nature
November	Portfolio	Shadows

OVERNIGHT EXCURSION TO PORCUPINE RIDGE “CEDAR & STONE”

We have booked “Cedar & Stone” for Monday, 18th to Thursday, 21st October, 2021 for our overnight excursion. This is usually a fun time photographing and mixing with like-minded people. There are only four vacancies remaining. The total cost per person is \$105 and we are asking for a deposit of \$70 per person to reserve your place.

Please ring Brenda Berry on 0419512380 as well as paying your deposit into the Club’s Bendigo Bank Account BSB: 633-000 Acct: 162977730 by Friday, 16th April, to reserve your position. We hope you’ll join us.

WILD FOOD FARM AND CONSERVATION HILL EXCURSION

It is proposed to have an excursion to the Wild Food Farm, 30 Rhyll/Newhaven Road, Rhyll (formerly the Trout Farm) on Thursday, 13th May, 2021, at 10 am for coffee and photography. When we're finished there we'll wander Conservation Hill on the Rhyll Road for more photography.

48th WARRAGUL NATIONAL PHOTOGRAPHIC COMPETITION & EXHIBITION



A proposed visit to see the Warragul National Exhibition on Saturday, 15th May, 2021 is being planned. More details to follow.

FROM THEO VAN DER MUELEN

Hi Jenny,

Just a thank you for the bouquet and cheque **today** - much appreciated.

I really enjoyed meeting with your members **today**, I was impressed by the number and types of questions raised, and I'm sure you'll all have lots of fun as you pursue your photography goals.

Here is the info I promised to provide:

Serge Ramelli and Lightroom - not the exact video I referred to but a good start
- <https://www.youtube.com/watch?v=ceyYPT8Fplw>

Gavin Hoey - one of the best photography teachers on the Youtube - Have been watching his tutorials for years and produced quite a few award winning images as a result - <https://www.youtube.com/watch?v=ywShIOcqLBU> .
I have attached a few images which were taken after watching a GH video.

Light wand - <https://www.ebay.com.au/itm/Handheld-LED-Video-Light-Wand-Stick-Portable-Waterproof-3000-6000K-Photography/333805508114>

Lumecubes V2.0 - <https://www.ebay.com.au/itm/LUME-CUBE-II-DUAL-PACK-LC-V2-2/223714690507?hash=item34166f45cb:g:3DUAAOSwrfFdrSql> - also available as singles

I referred to a Photoshop Filter I sometimes use for sharpening - it is called the High Pass Filter, used as follows:-

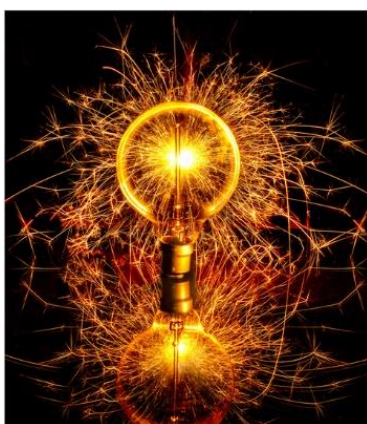
1. Duplicate the background layer (Ctr J or Command J)
2. With the new layer selected go to Menu>Filters>Other>High Pass
3. Adjust the Radius slider - I usually operate between 0.8 and 2.0 - click OK
4. The screen will go gray don't panic!
5. Go to the Blending Mode drop down list and select Linear Light
6. Take a look at the layer now. If over sharpened delete the layer, repeat the process with a smaller setting for radius
7. If you only want to apply the effect to part of the image you can apply a layer mask

I think that was everything but if I've forgotten something please let me know.

If any of the members are interested in looking at more of my images they are available on www.flickr.com/vanderimages

Regards

Theo van der Muelen





ARE WE HAVING PRINTS?

Our plan is to have Prints again for the Evaluation Topic (COVID permitting). A total of four images only can be entered into the evaluation. Four prints or four EDPIs or a combination prints/EDPIs totalling four.

When entering Prints we ask that an EDPI of the Print be entered also as our plan is to have the Prints displayed but to also show them in the slide-show so that everyone can see the detail on screen. It is important that Print EDPIs be labelled with PRINT eg **PRINT_Title of image_Membership No_Open_Jan 2020**

Please bring the actual PRINT along to the Newhaven Yacht Club for it to be displayed for Judges final perusal and for Members to view.

FOR UNIFORM ORDERS:

If anyone wishes to place an order for a blue polo shirt or jacket with the PICC Logo printed on it, orders can be placed, sizes chosen and paid for at Logos Unlimited, 17-19 The Concourse, Cowes asap.

These unify us as a group and advertises as well, and can be worn at our meetings and excursions.

THIS MONTH'S CHALLENGE – “Bokeh”

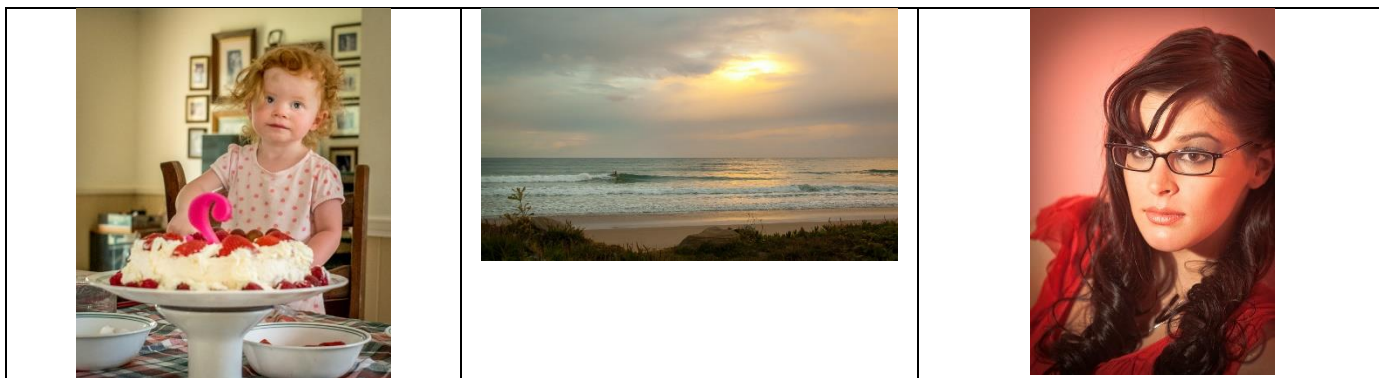
Bokeh is explained at <https://www.studiobinder.com/blog/what-is-bokeh-effect/>

We offer these extra challenges to give you new ideas and to keep you on the move with your photography, making sure you don't have a “photography freeze”.

Please limit your amount of images to five only, name them including your Club **Membership Number** and put them in a folder called “Challenge” and send them by email Friday before the meeting to Gary at parnellg@yahoo.com

LAST MONTH'S CHALLENGE – “Soft Light”

Gary will put together a slide-show for “Soft Light”. Go to the web-site to find a link to it.



SETTING OURSELVES PHOTOGRAPHY PROJECTS TO CREATE A BODY OF WORK:

Renee sent me this link to a YouTube video by Julieanne Kost who is employed by Adobe to promote Photoshop. In the video she explains her own personal journey whilst building up various bodies of work very successfully. Great photography. The link - <https://www.youtube.com/watch?v=MufiPDHg2R8>

WORKING WITH CHILDREN POLICE CHECK:

As a photography group we are quite often asked to record activities or promote photography at schools, which include children and if we haven't had a Police Check as individuals we can't really assist. We therefore encourage you all to do the police check. An application form needs to be filled out online at <http://www.workingwithchildren.vic.gov.au/home/applications/apply+for+a+check/>

Followed by a photograph at a Post Office. As volunteers there is no charge. Please let one of the Management Committee know when you receive your check.

EVALUATION OF "Open"

Theo van der meulen, was the evaluator for this month. When he retired Theo was looking for something to do and one of the things he chose was photography. He was inspired in particular by Youtube videos by Gavin Houey, an English Photographer and Serge Ramelli "Mastering Light Room in 60 minutes". Theo showed us some of his own photography including macro, photo stacking, flower and landscape. He had made digital images from slides by using a lumecube, placing the slide on the lumecube and then taking a macro shot. The image can then be post-processed in Light Room or whatever post-processor is used. The images Theo had handled this way came up really well with colour, contrast and sharpness and you wouldn't suspect that the image had been a slide from 1972. Theo was talking about the LumeCube which he used to photograph his slides with. They can also be used out in the field to light up macro shots as well as lighting up macro shots at home. His evaluation is at the end of the newsletter.

Gary has kindly put the images onto video which you can view by following the link <https://www.youtube.com/watch?v=vtP6h2THr3E>

HC & C Images can be found at <http://www.phillipislandcameraclub.com.au/galleries/>

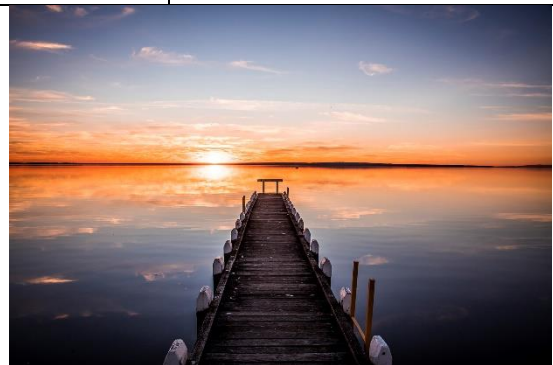


A LUME CUBE set.

EDPIs	TITLE	PHOTOGRAPHER
Highly Commended	Churchill Road	Brenda Berry
Highly Commended	Dark Lilies	Colleen Johnston
Highly Commended	Grantville Sunset	Ken Anderson
Highly Commended	Just Landed	Brenda Berry
Highly Commended	Waiting for a Feed	Will Hurst
Commended	Beach Abstract	Rhonda Buitenhuis
Commended	Deep in Denali	Joanne Linton
Commended	Evening Perfection	Rhonda Buitenhuis
Commended	Isaac Posing	Colleen Johnston
Commended	Inquisitive	Lynne Cook
Commended	Kilcunda Sunrise	Ken Anderson
Commended	Fashion Fatigue	Susan McLaughlin
Commended	Patchewollock Pump	Frank Zulian
Commended	Wasp	Rob McKay



HIGHLY COMMENDED
Churchill Island Road
Brenda Berry



HIGHLY COMMENDED
Grantville Sunset
Ken Anderson



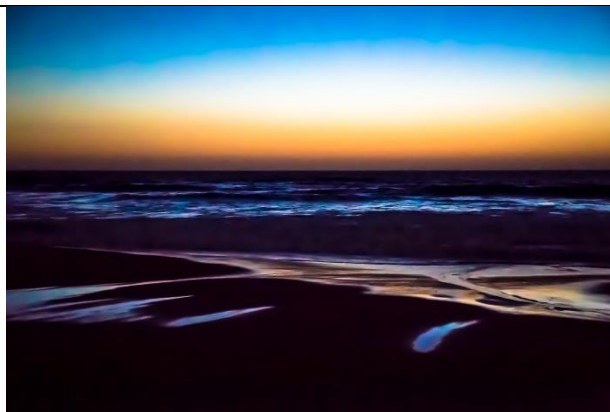
HIGHLY COMMENDED
Dark Lilies
Colleen Johnston



HIGHLY COMMENDED
Just Landed
Brenda Berry



HIGHLY COMMENDED
Waiting for a Feed
Will Hurst



COMMENDED
Beach Abstract
Rhonda Buitenhuis



COMMENDED
Deep in Denali
Joanne Linton



COMMENDED
Inquisitive
Lynne Cook



COMMENDED
Fashion Fatigue
Susan McLauchlin



COMMENDED
Patchewollock Pump
Frank Zulian



COMMENDED
Wasp
Rob McKay



COMMENDED
Evening Perfection
Rhonda Buitenhuis

DIGITAL IMAGES (EDPI):

- Images may either be created with a digital camera or created with a conventional camera and scanned into electronic format.
- Images may be enhanced or manipulated using image editing software, but the original image must have been made by the entrant.
- As per VAPS specifications (www.vaps.org.au), maximum horizontal dimension is 1920 pixels and the maximum vertical dimension is 1080 pixels.
- Each image file must be in sRGB JPEG format and a maximum of up to 5 Mb in size (5000kb).

Name your data image with Title of photo and your Club member number, separated by an underscore, followed by the topic & date eg: **Sunset on Woolamai Beach_126_Open_July2018**. Bring these specially named images on a memory stick to the meeting for transfer to a Club CD to be given to the judge.

Maximum of four entries in total either in PRINTS, EDPI or a combination of the two.

NOVICE CATEGORY REINSTATED:

To encourage new members to participate in the monthly evaluation, it has been decided to re-instate a NOVICE section. This will be in the EDPI (Electronic Digital Projected Image (I think I've got that right.)) format. We would like to emphasise that this is not a competition but a learning opportunity. If you need assistance to get started please speak to one of the Committee Members, who are only too happy to help. Maximum of four entries.

Label your entries NOV_(Title)_(PICC Number)_Topic_Month2020

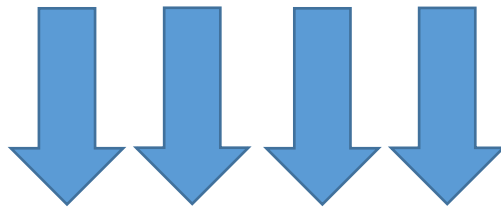
EDPIs can be forwarded to parnellg@yahoo.com

PRINTS

- Prints may be ANY size, up to a maximum of 40cm x 50cm (16in x 20in) when mounted.
- ALL prints MUST be mounted.
- Panoramic print formats are acceptable, but must fit on a 40cm x 50cm (16in x 20in) board.
- Prints mounted to a total thickness greater than 5mm will not be accepted.
- Please also include a digital image of the photo you send in labelled as for the EDPI, but starting with **PRINT:** e.g. **PRINT_Sunset on Woolamai Beach_126_Open_July2018**

NEWSLETTER ITEMS If you have anything to contribute to the Newsletter please send them to Lynne Cook at chinook@waterfront.net.au. Thanks to everyone who contributed so promptly. Help make this informative for everyone.

Judge's comments follow



**Phillip Island Monthly Club Competition – Judge Feedback for - March 2021 - Subject -
OPEN-- Judge - Theo Vandermeulen**

*Please refer to Judge Instruction Letter for ratings: **HC** (Highly Commended) - **C** (Commended)*

Sequence by Title	Member No	Title	Judge Rating	EDPI
1	399	A new friend		Lovely spontaneous capture. Exposure, focus etc all good. Captured great expression on child's face. A slight vignette on this image would reduce the impact of some distracting elements near the edges.
2	487	After the rain		In this black and white landscape, the creek provides a good leading line into the scene, which is continued by the line of poles leading into the dunes. Because there is no strong central subject would suggest a linear gradient to darken the top of the image to keep the viewer's eye in the image,
3	431	Beach abstract	C	Like the technique employed here – slow shutter speed reduces the scene to a number of abstract elements of colour and shape.
4	431	Cheeky Kookaburra		Nice capture of the bird – good connection with the camera. Good exposure and colour rendition. Background blurred using DOF but still very busy. Would suggest a vignette to keep the viewer's eye in the image.
5	770	Chillin		Funny image of the sleeping bear. The animal's relaxed posture is great but would obviously have been better with the head on the viewer's side of the log. Suggest slight reduction of exposure and a vignette to minimise the impact of the cyclone fence.
6	641	Churchill road	HC	Nice moody land/seascape. The overall dark exposure works well with the interesting sky and the reflections in the water. Pano format works well here. I also liked the trees on the left in silhouette.
7	770	collection		Interesting collection of old objects/tools. Generally when photographing objects like this and timber structure it pays to wait for directional lighting which produces contrast, shadows and textures. Here the lighting is fairly flat. The bright logs on the LH edge are distracting which could be addressed in Lightroom.

8	361	Dark Lillies	HC	Beautiful dramatic image. Great composition of the flowers which are well lit and razor sharp. Water droplets are very effective as is the muted background.
9	487	Deep in Denali	C	This image features a number of interesting compositional aspects. The contrast between the rolling foreground hills and the background mountains is interesting both for shape and colour. The zigzagging road leads the eye effectively into the image. People walking would have added to image if located further up the road. In this image I would be inclined to crop or clone them out.
10	601	Angles,Arcs & Aeoplanes		This is an interesting image. Would suggest a slight crop on the left hand side to eliminate the bright upright. I think the image would be improved with a slight (0.25-0.5 stop) reduction in exposure.
11	601	Peek a Boo		Photographer did well to see the potential of this scene. A slightly lower point of view would reveal more of the subject and eliminate some of the very bright fencing. Remember the viewer's eye is attracted to the brightest part of an image.
12	601	Sherbrooke Tranquillity		Nicely composed image of the boat house at the bottom of the Alfred Nicholas Memorial Garden. I think the image could be improved with a slight (0.5 stop) reduction in exposure to create a slightly moodier picture.
13	601	Shy Duo		Same idea as an earlier image. The lower point of view is more effective. I'm wondering if waiting to get a more 'face on' view of the goats was possible – it would have produced a more engaging image.
14	431	Evening_Perfection	C	A number of elements came together here to produce a nice image. The golden hour light is lovely and the tree, the swans and poles in the water combine to provide a pleasing composition. Suggest a slight crop on top and LHS
15	326	Got You		Nice pet image – hard to resist a cute fluffy kitten with bright blue eyes. Good control of depth of field –

				good exposure and colours, other kitten in background is a distraction.
16	866	Grantville Sunset	HC	Lovely image with great colours. Here the central position of the jetty works well. Shot at the exact right moment to produce great colours and reflections.
17	399	grey shrike-thrush		Well captured image of this little bird. Nice catchlight in the eye of the bird. The bright timber perch is the brightest part of the image and would recommend toning it down in Lightroom or similar.
18	361	laac Posing	C	This cat has spectacular presence and the viewers' eye is led straight to the eyes of Isaac. The maker did well to ensure the background of this image is totally devoid of any distractions. This image is totally about Isaac, and to increase impact I would suggest slight crop top and left.
19	326	Inquisitive	C	Cute kitten and the expression well captured. I would suggest a 'portrait' crop to reduce the impact of the large dark object at the right edge and some darkening of the bright cushion behind the main subject.
20	641	Just Landed	HC	Very dynamic image of the pelican. The landing pose of is great as is the exposure and the colour. Slight blur in the wings suggests movement. Good PP work to isolate the central subject.
21	866	Kilcunda Sunrise	C	Spectacular sunrise featuring dramatic colours and an interesting sky. Exposure is great and the use of a slow shutter speed has smoothed the surface of the ocean – well done.
22	377	Meerkat		Well exposed image of this cheeky fellow. Maker has captured an interesting pose and there is good contact between the camera and the subject. Good exposure and DOF. Suggest a vignette to darken the edge of the image slightly to keep the viewer's eye in the image.

23	770	nice_view		Nice compositional idea to frame the outside view with the window and the foreground silhouettes. The image looks slightly overexposed by about ½ stop. A slightly different point of view would eliminate the edge of the building protruding on LHS
24	869	Fashion Fatigue (NOVICE)	C	The combination of the model, an interesting pose and the brightly coloured background work together to produce an interesting image. The shadows
				falling on the model's face, usually a negative, in this case add to the vibe of the image. Would try a slight reduction in exposure.
25	869	Home Port (NOVICE)		The maker here has effectively captured fore, middle and background in this image. In this case though the camera has focused on the foreground and the limitations of DOF has caused the boats to be slightly soft. Also, the foreground is bright compared to the rest of the image and holds the viewer's attention.
26	863	dancing_clouds (NOVICE)		Well exposed landscape with an interesting sky. A strong central subject is needed to engage the viewer's attention.
27	863	fishing_boats (NOVICE)		A nicely composed and interesting scene. The sky suggests a fairly bright day but overall the image looks like it was taken on a dull day. Suggest increasing exposure in PP by ½ to ¾ stop. Always check edges for objects 'cut off'. Here a slight camera movement would have included all the boat on the LHS
28	863	silhouette sunset (NOVICE)		Nice panorama with dramatic sky and colours. The silhouetted trees work well but suggest some tightening of the composition by cropping the left side to eliminate the small tree, and the right side to eliminate the large tree poking in from the right edge.
29	863	uber_eats (NOVICE)		I loved the humorous element of the frogs looking in the window. The main issue here is one of focus or camera movement. The image lacks sharpness throughout.

30	487	OOPs		Love the pose and the expression. The image is sharp and well exposed. Would suggest a slight crop to create an aspect ration of 2:3 -also a slight increase in exposure and contrast.
31	862	PatchewollockPlain		Simple effective image, well exposed and sharp. Sky is featureless. Would suggest photographing again on a cloudier day.
32	862	PatchewollockPump	C	This is a strong and evocative image. It tells the story of abandonment. Love the stark colours and the dark ominous sky. I like the muted colours.
33	862	PatchewollockSiloArt		Silos captured at golden hour producing great light and enhancing the art work. The darker building to the right produces an effective contrast to the silo. Would suggest cloning out the power lines. The image also has a slight amount of 'digital noise', probably caused by high ISO. I note the shutter speed was 1/000sec and aperture f11. Plenty of room to reduce the ISO. The use of a short focal length has created converging verticals on the buildings which contrast with the slope in the terrain. Chromatic aberration around the dark building can be removed in LR
34	862	PatchewollockStore		Another image to catch the 'former glory' of this rural town. The image is slightly soft, and would be improved with a wider lens or stepping back to create more space around the buildings.
35	399	perching		Interesting shot of the birds perching on the yacht. I can imagine the cleanup job on the boat. The second yacht in the background is somewhat distracting and could have been eliminated by moving the camera a few meters to the right.
36	377	Playing the Banjo		Musicians generally make great subjects, and here the look of concentration on the performer's face draws the viewer in. There are however two issues here. First the image has lots of digital noise which is quite intrusive, and secondly the microphone stands in front of the performer are quite distracting.

	361			Photographing flowers well is surprisingly difficult. There are three main challenges – first the composition or the placing of the flowers in the frame is important. Second, effective lighting will have a significant impact and third, because the camera is so close it is hard to get an adequate depth of field. In this image, two of the poppies are turned away from the camera and the lighting is quite uneven, leaving dark spots. The one bloom facing the camera is not quite sharp. Generally focus stacking is required for this type of shot
37		Poppies		unless all the flowers are in the same focal plane. Use of the dark background is effective.
	326			Well exposed portrait of the kitten. Good control of DOF isolates the subject well. Love the colours and the contrast between blue eyes and brown tones. Take care to ensure sharp focus on fur and eyes. Would like to see a bit more space to the left of the cat's head.
38		Rag doll kitten		
	377			The motion of the cyclist taking the corner has been well captured. A fast shutter speed has frozen the motion well. The image is well suited to the black and white treatment. Not sure what filter was applied in post processing and I suspect it might have been a better image without it. Matter of taste.
39		Round the bend		
	476			Well captured and sharp image of the gull. Good control of DOF to blur the background. Animal photos are always better when they capture a 'behaviour' and here the squawking motion creates a more interesting image.
40		Squawking		
	641			Good action shot. The fast shutter (1/1600 sec) has frozen the action of both the surfer and the water. A bit more space to the left of the surfer would create a more balanced image as would a POV which showed the front and the face of the surfer
41		Surfer Joe		
	431			Nicely composed image – the mist over the sea and foreground creates great soft light and colours.
42		The_Unsettled_Sea		

43	770	tranquility		Nice composition and warm light combine to produce an attractive image. Did well to get a large depth of field from foreground to background.
44	447	Unknown Flower Bud		Well lit macro shot. Did well to achieve good sharpness throughout. Hope the maker had a chance to photograph again as the flower opened revealing the internal details. Dark background effective.
45	447	Waiting For A Feed	HC	Well shot image of the pelicans. Arrangement of the two subjects creates an interesting composition. Good lighting and DOF has created great colours and textures
46	487	Waiting to Go		Nice image with a story. Well exposed and sharp and an interesting combination of the large locomotive and the tiny human.
47	377	wasp	C	Good macro image. Maker did well to get adequate DOF of the main subject. Suggest a little PP to slightly increase the exposure on the insect.
48	326	What are You Doing		Another image of this cute kitten. In this case the image is not quite sharp. The eyes particularly need to be razor sharp. Also the red area to the left draws the eyes away from the subject.
49	866	Yacht Ramp Old Wood S		Potentially interesting image but the zone of sharp focus is very limited. As the aperture on the camera was set to f13, I assume the maker has applied some post processing to create blur in the foreground and background. Would be a better image with the wooden object in the foreground being sharp.