

# PHILLIP ISLAND CAMERA CLUB INC: DECEMBER 2021



**Meetings:** 1<sup>st</sup> Monday of the month 1.30 - 4pm (Easter & Cup weekend exceptions)

**Website:** <http://www.phillipislandcameraclub.com.au>

**Club FB Page:** <https://www.facebook.com/groups/382689165127848>

**Enquiries:** Jenny – [phillipislandcameraclub@gmail.com](mailto:phillipislandcameraclub@gmail.com)



Grumpys Crazy Golf cow at Cowes, image by Lorraine Tran.

**SEASONS GREETINGS**  
to all PICC club  
members.

Wishing you a very happy and  
safe Christmas and relaxing  
New Year filled with  
photography.

See you in 2022!

## CALENDAR DATES FOR YOUR DIARY

The following is a list of the proposed dates for Camera Club functions so that you can pencil them into your diary. Please check your emails for changes due to COVID-19 restrictions.

Date	Function	Date	Function
Tuesday 14 <sup>th</sup> December 2021	End of year (Christmas) get together, Cowes RSL.	Sun 6 <sup>th</sup> February 2022	Images for the Monthly Challenge due to Gary – topic 'Chicory kilns – local landmarks'.
Tues 14 <sup>th</sup> December 2021	Entries close for the 2022 Leongatha Rotary Art and Photography Show	Mon 7 <sup>th</sup> February 2022	PICC Meeting @ 1:30 pm Newhaven Yacht Squadron Clubrooms (COVID-19 restrictions permitting)
Sat 15 <sup>th</sup> January – 5 <sup>th</sup> February 2022	Leongatha Rotary Art and Photography Show, Leongatha Memorial Hall, Michael Place, Leongatha	Tues 8 <sup>th</sup> February 2022	Excursion and macro workshop @ 1:30pm with Theo Van der Muelen at Wywurri, 180 Martyn Lane, Inverloch, 3996. Bring camera, macro lens and a tripod.
Sunday 16 <sup>th</sup> January	Images for evaluation of images due to Gary – topic 'Open'. (For February meeting.) Images for VAPS selection due to Gary.	21 <sup>st</sup> February 2022 (TBC)	Using your camera in manual mode – on the beach with Rob McKay. Details to come.

## 2022 SYLLABUS

The 2022 syllabus is shown below. Descriptions for each topic will be available shortly on the PICC website.

Month	Submission date (to Gary) and topic for judge's evaluation	Date of meeting and evaluation of images by judge	Monthly Challenge (submitted the day before the scheduled meeting)
January	16 <sup>th</sup> - Open	No meeting in January	No meeting in January
February	6 <sup>th</sup> - Framed	7 <sup>th</sup> Open	Chicory kilns/local landmarks
March	6 <sup>th</sup> - Open	7 <sup>th</sup> Framed	Low key
April	3 <sup>rd</sup> - Macro	4 <sup>th</sup> Open	Flat lay
May	1 <sup>st</sup> - Open	2 <sup>nd</sup> Macro	Panning
June	5 <sup>th</sup> - Mobile phone	6 <sup>th</sup> Open	Golden ratio/Fibonacci effect
July	3 <sup>rd</sup> - Open	4 <sup>th</sup> Mobile phone	Portraits
August	July 31 <sup>st</sup> - Negative space	1 <sup>st</sup> Open	Photojournalism
September	4 <sup>th</sup> - Open	5 <sup>th</sup> Negative space	Reflections
October	2 <sup>nd</sup> - Abstract	3 <sup>rd</sup> Open	Monochrome/sepia
November	6 <sup>th</sup> - Portfolio	7 <sup>th</sup> Abstract	Contrasting colours
		Portfolio	Shallow depth of field

### TOPIC FOR SUBMISSION IN JANUARY - OPEN

This familiar topic allows members to continue developing their skills and extending the range of photographic styles that they attempt. Members may consider revisiting previous topics; reworking an earlier image, implementing acquired knowledge; trying new photographic genres; using topics of their choice; or experimenting with aspect ratios, colour or monochrome or HDR treatments. The variety produced under this topic will assist with the choice of images for VAPS.

**DUE TO GARY ON JANUARY 16, 2022.**

### CHALLENGE FOR FEBRUARY MEETING CHICORY KILNS/LOCAL LANDMARKS

Chicory Kilns are distinctive buildings and landmarks for Phillip Island. Chicory farming on Phillip Island was introduced in 1870, with the plant's root destined primarily for use as a coffee additive or substitute. The first **chicory kiln** was built in 1873, followed by a second in 1880 and by 1920 there were at least 25 kilns on the island. There are 33 remaining kilns in Victoria, 28 of these are located on Phillip Island and French Island.

Location of old kilns – remnants of chicory farming on Phillip Island:

- Opposite Oswin Roberts Reserve, Harbison Road
- Back Beach Road (near roundabout with Phillip Island Road)
- Back Beach Road (past the race track, near Bimbadeen)
- Phillip Island Wildlife Park, Phillip Island Road

A **landmark** is a building or feature which is easily noticed and can be used to judge your position or the position of other buildings or features. Images for the February Challenge are due to Gary by 6 February.

## **IMAGES FOR VAPS SELECTION**

All members are encouraged to submit three to four of your best images for selection for VAPS. These images should have been taken in the last couple of years. These images are to be **submitted to Gary by 16<sup>th</sup> January** and must be labelled using the following format:

**VAPS\_Sunset on Woolamai Beach\_999\_Jan\_2022**

Our VAPS selection committee:

Rob McKay  
Graham Lawry  
Alan Lacey  
Colleen Johnston  
Frank Zulian

## **2022 EXCURSIONS**

If you have any suggestions for excursions, please email your ideas to Lynne Cook at [chinook@waterfront.net.au](mailto:chinook@waterfront.net.au)

## **END OF YEAR LUNCH FUNCTION**

A reminder for those attending that the end of year get-together lunch will be held at the Phillip Island RSL in Cowes on Tuesday 14<sup>th</sup> December at 12noon.

## **NEW MEMBERS**

Welcome to two new members, Judith Meier and Judy Smeath who joined our club in October. We hope you enjoy being a member of the club and that you find our meetings and excursions interesting, informative and useful.

## **WEBSITE UPDATE**

The PICC website is in the process of being updated. One section of the website includes links to members' information and up to five of their images. <http://www.phillipislandcameraclub.com.au/members/>

If you would like to be included in this section, please send a short bio about your photographic background and experience and five images to Gary. Others already featured may wish to update their information and provide new images.

## **OVERNIGHT EXCURSION TO PORCUPINE RIDGE "CEDAR & STONE"**

The overnight excursion to Porcupine Ridge has been rescheduled to Tuesday 3 May - Friday 6 May 2022. Brenda has contacted those who had previously registered to attend this excursion in October 2021. There are two vacancies available for this excursion, so please contact Brenda if you are interested in attending.

## **EXCURSION RECORDS**

The Management Committee has had ongoing discussions about our insurance coverage through VAPS. Individual members and their equipment are not covered, however the club is, should an incident occur. Only meetings and excursions organised by the club, advertised in advance for all members are recognised as official club events because risk is assessed when organising these activities. So that a person of your choice can be contacted in an

emergency whilst you are involved in club activities, Brenda will collect this information and keep it in a safe and secure place. It will only be accessed if the need arises.

## **LEONGATHA ROTARY ART AND PHOTOGRAPHY SHOW**

The 2022 Leongatha Rotary Art and Photography Show will run from Saturday 15 January to Saturday 5 February at the Leongatha Memorial Hall, Michael Place, Leongatha (subject to COVID-19 restrictions).

For more information go to <https://www.leonartshow.com.au/> **Entries close on 14th Dec 2021.**

To staff this event the Rotary Art and Photography show organisers are asking local artist and photographers, and/or their friends, to help by volunteering to spend 2 x 2 hour shifts between 10am and 4pm, to man the entry with a Rotary person. Rotary is offering a 50% reduction off your entry fee for your assistance.

If you are interested, please contact David John from Rotary on 0419 175 645, prior to lodging your entry form to indicate your preferred time and date.

## **SURVEY: MEETING AND SUPPORTING YOUR NEEDS - BUDDIES AND WORKSHOPS**

Thanks to those members who filled in the survey sent by email or completed it during our November or December meeting. Please contact Lorraine if you haven't yet filled in the survey and would be happy to provide information about the photographic equipment you use, what you'd like to learn about next year and whether you'd like be involved in the Buddy system.

## **WORKING WITH CHILDREN CHECK:**

As a photography group we are quite often asked to record activities or promote photography at schools, which include children and if we haven't had a Police Check as individuals we can't really assist. We therefore encourage you all to do the check. An application form needs to be filled out online at <http://www.workingwithchildren.vic.gov.au/home/applications/apply+for+a+check/>

and photograph obtained at a Post Office. As volunteers there is no charge. Please let one of the Management Committee know when you receive your check.

## **EVALUATION OF PORTFOLIOS**

Adrian Smith was the evaluator for this month's portfolios. His comments on the folios can be found at the end of the newsletter. Included below is a sample image from each portfolio, followed by Adrian's comments. Each entrant gained either a Highly Commended or Commended. Well done everyone!

Gary has kindly put the images onto video which you can view by following the link <https://www.youtube.com/watch?v=T4Syq9CARaQ>

Some of the images below have been cropped slightly. It is recommended the full-size images are viewed on the video on YouTube.





**Will Hurst: Seascape**  
**HIGHLY COMMENDED**



**Lynne Cook: Changing scenery**  
**COMMENDED**



**Colleen Johnston: Flowers**  
**HIGHLY COMMENDED**



**Joanne Linton: Flora**  
**HIGHLY COMMENDED**



**Ken Anderson: Birds**  
**HIGHLY COMMENDED**



**Graeme Lawry: Birds**  
**HIGHLY COMMENDED**

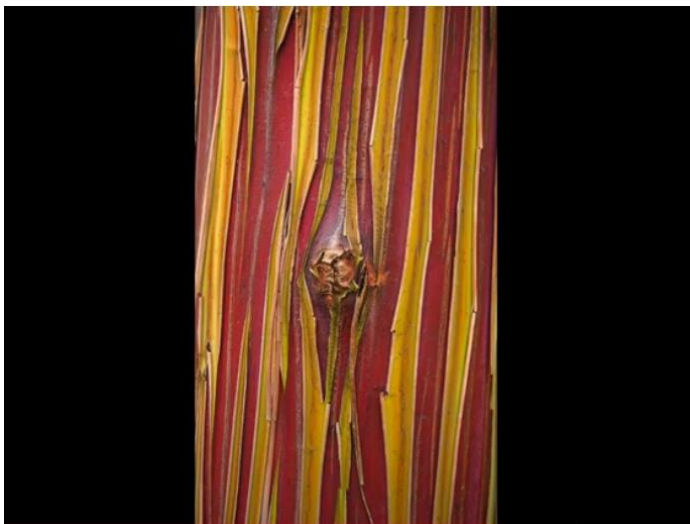




**Susan McLauchlan: Coastal long exposure**  
**HIGHLY COMMENDED**



**Kathryn Shadbolt: Trees**  
**COMMENDED**



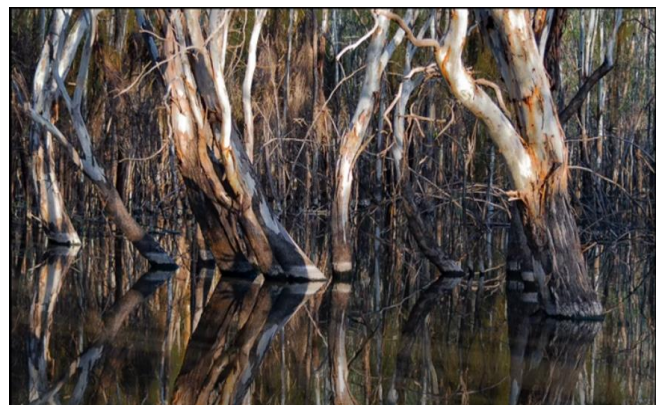
**Jenny Sierakowski: Eucalyptus magic**  
**HIGHLY COMMENDED**



**Jenny Skewes: Fungi**  
**COMMENDED**



**Rhonda Buitenhuis Karlu Karlu – The Devil's Marbles**  
**HIGHLY COMMENDED**



**Brenda Berry: Flooded forest Hattah Lakes**  
**HIGHLY COMMENDED**



**Helen Stewart: Spring storm  
COMMENDED**



**Helen Stewart: Spring storm  
COMMENDED**

**JUDGE'S COMMENTS: December 2021 –Portfolio judged by Adrian Smith**

Member no.	Title of portfolio	Judge's rating	Judge's comments
447	Seascape	Highly commended	A great set of 4 images telling the tale of our surrounding coastline. Each image shows great detail and texture. Well, composed and proportioned and we have the added sky area to finish off.
326	Changing scenery	Commended	A diverse range of images here come together to certainly convey the story of your folio. Your images draw us across our nation covering different terrain and results of a recent bushfire.
361	Flowers	Highly commended	Here we have 4 single flowers of various types and colours. All sharp and well captured. Well detailed and showing off the textures of the petals and stems. If I were to make a suggestion, the stamen of the tulip needs to be darkened.
487	Flora	Highly commended	More examples of a strong floral folio. Great colour and textures again here. In particular the very first image is sharp so enhancing the details right to the little hairs on each petal. Taken from behind is different and adds impact. Different approach to remaining images. Well done.
866	Birds	Highly commended	The 4 bird images have been captured in differing situations and well handled. From the bath to in flight all four are very well caught. Love the motion in the bath to the difficult to capture in flight. A good selection for your folio.
869	Costal Long exposure	Highly commended	These images have a strong tie linking them together and that to me is long exposure thus creating an almost frozen effect. I liked the mix of warm and cool toning as well.
875	Birds	Highly commended	The Birds folio starts with a mirror image of a pelican. Followed by two great in flight captures, which are very difficult to get right but you have nailed. They are great. Finally, a bird taking time out for preening. Excellent bird images.
601	Trees	Commended	An interesting array of your tree subject here. Each image is different though all contain water. The first has a fishing rod so good you take your camera along too. The second may have a colour balance problem having a magenta cast across it. We have a nice warm finish to your folio.
770	Eucalyptus magic	Highly commended	Love the array of colours, textures and patterns captured here. Well seen and captured as a lot of us would walk past and not even see the features of our own Eucalyptus trees. Well done.

Member no.	Title of portfolio	Judge's rating	Judge's comments
399	Fungi	Commended	A difficult subject well-handled due to their size and often difficult locations. Well seen and captured here with one detail that would improve more and that is sharpness. I know macro work is difficult, but it needs to be sharp.
431	Karlu Karlu	Highly commended	You have captured some of our magnificent outback colour and textures. Different scenes and differing time of day really tell your story of our outback. A good selection to add impact to your folio.
641	Flooded forest Hattah Lakes	Highly commended	A wonderful selection of your images with similar elements of composition. These being your trees and their at times abstract reflections. Otherwise, you have lovely mirror reflections. Well seen and captured.
863	Spring storm	Commended	A strong showing of cloudscares in each image used to add drama to your folio images here. Added interest here also with different situations used to convey the message too.

### **DIGITAL IMAGES (EDI):**

- Images may either be created with a digital camera or created with a conventional camera and scanned into electronic format.
- Images may be enhanced or manipulated using image editing software, but the original image must have been made by the entrant.
- As per VAPS specifications ([www.vaps.org.au](http://www.vaps.org.au)), maximum horizontal dimension is 1920 pixels and the maximum vertical dimension is 1080 pixels.
- Each image file must be in sRGB JPEG format and a maximum of up to 5 Mb in size (5000kb).

Name your data image with Title of photo and your Club member number, separated by an underscore, followed by the topic and month when the judge will present the images to the members at the monthly meeting eg: **Sunset on Woolamai Beach\_126\_Open\_Feb2022**.

Maximum of four entries in total either in PRINTS, EDPI or a combination of the two.

### **NOVICE CATEGORY REINSTATED:**

To encourage new members to participate in the monthly evaluation, it has been decided to re-instate a NOVICE section. This will be in the EDPI (Electronic Digital Projected Image (I think I've got that right.)) format. We would like to emphasise that this is not a competition but a learning opportunity. If you need assistance to get started please speak to one of the Committee Members, who are only too happy to help. Maximum of four entries.

Label your entries NOV\_(Title)\_(PICC Number)\_Topic\_Month2020

EDPIs can be forwarded to [parnellg@yahoo.com](mailto:parnellg@yahoo.com)

### **ARE WE HAVING PRINTS?**

Our plan is to have Prints again for the Evaluation Topic in 2022 (COVID permitting). A total of four images only can be entered into the evaluation. Four prints or four EDPIs or a combination prints/EDPIs totalling four.



When entering prints we ask that an EDPI of the Print be entered also as our plan is to have the Prints displayed but to show them in the slide-show so that everyone can see the detail on screen. It is important that Print EDPIs be labelled with PRINT e.g. **PRINT\_Title of image\_Membership No\_Open 202\_Feb2022**

Please bring the actual PRINT along to the Newhaven Yacht Club for it to be displayed for the judge's final perusal and for members to view.

### **PRINTS**

- Prints may be ANY size, up to a maximum of 40cm x 50cm (16in x 20in) when mounted.
- ALL prints MUST be mounted.
- Panoramic print formats are acceptable, but must fit on a 40cm x 50cm (16in x 20in) board.
- Prints mounted to a total thickness greater than 5mm will not be accepted.
- Please also include a digital image of the photo you send in labelled as for the EDPI, but starting with **PRINT: e.g. PRINT\_Sunset on Woolamai Beach\_126\_Open\_July2018**

**NEWSLETTER ITEMS** If you wish to contribute to the monthly newsletter please send items to Lorraine Tran at [tranlorraine@gmail.com](mailto:tranlorraine@gmail.com)

Thanks to everyone who contributed so promptly. Please help make this newsletter informative for everyone.