

PHILLIP ISLAND CAMERA CLUB INC: MARCH 2022



Meetings: 1st Monday of the month 1.30 - 4pm (**Easter & Cup weekend exceptions**)

Website: <http://www.phillipislandcameraclub.com.au>

Club FB Page: <https://www.facebook.com/groups/382689165127848>

Enquiries: Jenny – phillipislandcameraclub@gmail.com

CALENDAR DATES FOR YOUR DIARY

The following is a list of the proposed dates for Camera Club functions so that you can pencil them into your diary. Please check your emails for changes due to COVID-19 restrictions.

Date	Function	Date	Function
Tuesday 22 March from 9am – 11:00am (approx.)	Excursion to Pink Granite Quarry: meet in the car park (near toilet block) at the end of Cottosloe Avenue, Cape Woolamai.	23 rd – 25 th April	Waverley Camera Club visit to Phillip Island. 23 rd – dinner with WCC members – details to come.
Sunday 3 rd April	Images for judge's evaluation due to Gary – topic for evaluation is 'Macro' and for the Monthly Challenge 'Flat Lay'.	Sunday 1st May	Images for judge's evaluation due to Gary – topic for evaluation is 'Open' and for the Monthly Challenge 'Panning'.
Monday 4 th April 2022 1:30pm – 4:00pm	PICC Meeting Newhaven Yacht Squadron Clubrooms (afternoon tea returns – BYO cup and gold coin donation)	Monday 2 nd May, 1:30 – 4:00pm	PICC Meeting at Newhaven Yacht Squadron Clubrooms (afternoon tea – BYO cup and gold coin donation)
Thursday 7 th April from 9am to 10:30am (approx.)	Excursion to Kilcunda – meet in the carpark between Kilcunda Oceanview Holiday Retreat and the bridge.	Tuesday 3 rd May – Thursday 5 th May	Overnight excursion to Cedar and Stone 489 Porcupine Ridge Road, Glenlyon, 3461, Vic. For those who have prebooked.

2022 SYLLABUS

The 2022 syllabus for the remainder of the year is shown below. Descriptions for each topic have been emailed to members and are also available on the PICC website.

Month	Submission date (to Gary) and topic for judge's evaluation	Date of meeting and evaluation of images by judge	Monthly Challenge (submitted the day before the scheduled meeting)
April	3 rd - Macro	4 th Open	Flat lay
May	1 st - Open	2 nd Macro	Panning
June	5 th - Mobile phone	6 th Open	Golden ratio/Fibonacci effect
July	3 rd - Open	4 th Mobile phone	Portraits
August	July 31 st - Negative space	1 st Open	Photojournalism
September	4 th - Open	5 th Negative space	Reflections
October	2 nd - Abstract	3 rd Open	Monochrome/sepia
November	6 th - Portfolio	7 th Abstract	Contrasting colours
		Portfolio	Shallow depth of field

TOPIC FOR SUBMISSION IN APRIL - MACRO

Macro photography (or photomacrography^{[1][2]} or macrography,^[3] and sometimes macrophotography^[4]) is extreme close-up photography, usually of very small subjects and living organisms like insects, in which the size of the subject in the photograph is greater than life size (though *macrophotography* also refers to the art of making very large photographs).^{[3][5]} By the original definition, a macro photograph is one in which the size of the subject on the negative or image sensor is life size or greater.^[6] In some senses, however, it refers to a finished photograph of a subject that is greater than life size.^[7]

References

https://www.google.com/search?q=macro+photography&rlz=1C5CHFA_enAU825AU825&sxsrf=AOaemvKkznUt7Kb4lqJB2GN6HSSysZCmFA:1635830445407&source=lnms&tbm=isch&sa=X&ved=2ahUKEwssvGk9_jzAhVAIbcAHUq4D4lQ_AUoAXoECAEQAw&biw=1298&bih=956&dpr=1.8

<https://www.masterclass.com/articles/complete-macro-photography-guide-for-beginners>

<https://digital-photography-school.com/macro-photography-for-beginners-part-1/>

<https://www.canon.com.au/get-inspired/macro-photography-tips-jacqui-dean>

DUE TO GARY ON APRIL 3, 2022.

MONTHLY CHALLENGE FOR MARCH MEETING 'FLAT LAY'

Flat Lay Photography is a photograph taken from directly above looking down on usually products or food. It gives a bird's eye view of what it is you're photographing and is an extremely popular genre of photography on social media.

References

https://www.google.com/search?q=flat+lay+photography&rlz=1C5CHFA_enAU825AU825&sxsrf=AOaemvJH3K4XPuxtX4EUA_mv86iYaoQ-gQ:1635830832143&source=lnms&tbm=isch&sa=X&ved=2ahUKEwix76Xd-PjzAhU9_XMBHWZzAX0Q_AUoAXoECAEQAw

<https://www.befunky.com/learn/flat-lay-photography/>

<https://fatmumslim.com.au/so-what-the-heck-is-a-flatlay/>

<https://www.picmonkey.com/blog/10-flat-lay-photography-tips>

To view the complete list of definitions for this year's topics go to:

<http://www.phillipislandcameraclub.com.au/wp-content/uploads/2022/02/PICC-2022-Syllabus-Defintions2-.pdf>

VAPS – SUBMISSION OF IMAGES

Thanks to the VAPS selection committee comprising of Rob McKay, Graeme Lawry, Alan Lacey, Colleen Johnston and Frank Zulian, who are finalising the PICC entries. Selected images will be shown at the VAPS Annual Convention in Wangaratta from 3rd – 5th June. If you are interested in attending, the convention, please register by 25th May. Full registration is \$190, daily rate is \$77 and the awards dinner only is \$65.

For further information go to <https://www.vaps.org.au/convention.html>

NEW MEMBER

Welcome to our new member, Lynda Hanlon who joined our club in February. We hope you enjoy being a member of the club and that you find our meetings, excursions and workshops interesting, informative and useful. It was great to see a few other potential members at our monthly meeting on Monday 6th March.

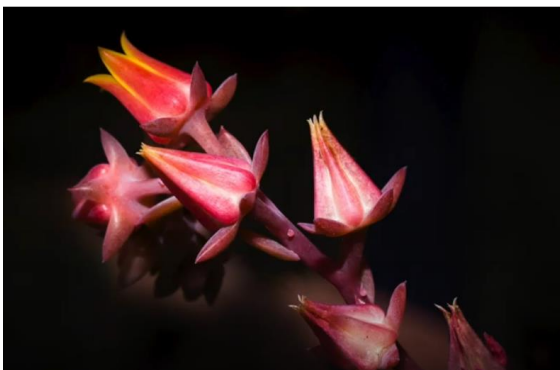
FIVE MINUTES OF FAME IS BACK

Thanks to Graeme Lawry who presented his 'Five Minutes of Fame' at our March meeting. We very much enjoyed hearing about your journey in photography and viewing your amazing images especially your birds in flight! We look forward next month to a Five Minutes of Fame presentation by Jenny Skewes.

MONTHLY CHALLENGE: LOW KEY

Thanks to all who contributed their images to the Monthly Challenge, and to Gary for compiling the slideshow of the images available at <https://www.youtube.com/watch?app=desktop&v=BLnVtxOaqjM>

Here's a small selection of the images.



WORKSHOP: ZOOM SESSION ON THE LIGHTROOM CATALOGUE

In this 1-hour Zoom workshop, Gary Parnell demonstrated how he sets up his files using Lightroom. You can view the recorded session at the following link:

<https://www.youtube.com/watch?app=desktop&v=J5NvKB3Xb1s&list=PL3Fm29zdw3Fam4agf1JBTJNKKErjklpnl>

EXCURSION TO PINK GRANITE QUARRY

Members attending the Pink Granite Quarry excursion on Tuesday 22 March please meet at 9am in the car park (near toilet block) at the end of Cottosloe Avenue, Cape Woolamai. Please wear comfy walking shoes. Bring morning tea, your camera gear, water, hat and sunscreen.

EXCURSION TO KILCUNDA

Those attending the Kilcunda excursion on Thursday 7th April please meet in the carpark between Kilcunda Oceanview Holiday Retreat and the Kilcunda bridge at 9am. More details to come...

OVERNIGHT EXCURSION TO PORCUPINE RIDGE 'CEDAR & STONE'

A reminder that the overnight excursion to Porcupine Ridge will be held on Tuesday 3 May - Friday 6 May 2022. Brenda has contacted those who had previously registered to attend this excursion in October 2021. There are now no vacancies available for attending this excursion.

UPCOMING EXCURSIONS – DATES TO BE ANNOUNCED

Using manual mode in your camera with Rob McKay.

Light painting with Liam Sierakowski.

EMERGENCY CONTACT DETAILS

In case of an emergency situation arising during meetings, workshops or excursions, if you haven't already done so, please fill in the Emergency Contact Details form emailed along with this newsletter. Thanks to those members who have already completed the required details. The completed form should be sent to Brenda who will keep the forms in a safe and secure place. It will only be accessed if the need arises. Brenda's email is brendave79@gmail.com.

VISIT FROM WAVERLY CAMERA CLUB

Waverly Camera Club will be visiting Phillip Island during the Anzac Day/long weekend between 23rd – 25th April. Rob McKay is liaising with the WCC and will advise of planned meetups and activities. A dinner is planned for 23rd April and PICC members are invited to attend. Details of time and venue to be advised.

WORLD VISION FLOWER SHOW

Unfortunately, World Vision (Phillip Island) decided not to go ahead with the flower show during Autumn. There is still a possibility of it being held later in the year.

WORKING WITH CHILDREN CHECK:

As a photography group we are quite often asked to record activities or promote photography at schools, which include children and if we haven't had a Police Check as individuals we can't really assist. We therefore encourage you all to do the check. An application form needs to be filled out online at

<http://www.workingwithchildren.vic.gov.au/home/applications/apply+for+a+check/>

and photograph obtained at a Post Office. As volunteers there is no charge. Please let one of the Management Committee know when you receive your check.

NEWHAVEN YACHT SQUADRON

In order to show our appreciation for the continued use of the Newhaven Yacht Squadron Clubrooms for our monthly meetings (at no charge), PICC is holding a photo competition. Newhaven Yacht Squadron will advise PICC of the chosen subject matter for the competition. The winning image will be framed and presented to the squadron.

PICC UNIFORM

If you are interested in purchasing uniform items with the embroidered PICC logo please contact me (lorrainetran@gmail.com.au or phone 041 933 1630). **Please indicate what item/s you are interested in purchasing, and the size by Wednesday 30th March.** I will bring samples of the items you select to try on at the next meeting on 4th April. Logos Unlimited requires a bulk order (at least 6 items) from our club otherwise the cost for individual items increases \$20 per item due to cost of setting up the machine for doing the machine embroidery.

Item	Cost estimate
Ladies Navy BIZTECH plain soft shell jacket	\$93.06 + embroidered PICC logo \$10.99 = \$104.05
Men's Navy BIZTECH plain soft shell jacket	\$93.06 + embroidered PICC logo \$10.99 = \$104.05
JB's Long sleeve contrast polo (navy/white)	\$32.62 + embroidered PICC logo \$10.99 = \$43.61
Jeni B Contrast polo (navy/white) (UVF)	\$28.82 + embroidered PICC logo \$10.99 = \$39.81
Contrast polo (navy/white)	\$28.82 + embroidered PICC logo \$10.99 = \$36.81

EVALUATION OF 'FRAMED' IMAGES

Paul Lucas was the evaluator for this month's portfolios. His comments on the folios can be found at the end of the newsletter. Included below are a selection of images awarded Highly Commended and Commended, followed by Paul's comments. There were 6 Highly Commended and 5 Commended Awards. Well done to all who submitted images! The Highly Commended and Commended images can be viewed at <http://www.phillipislandcameraclub.com.au/galleries/>

AWARD	TITLE	PHOTOGRAPHER
Highly Commended	Down the pathway	Joanne Linton
Highly Commended	Watching the mast	Kathryn Shadbolt
Highly Commended	In the frame	Jenny Skewes
Highly Commended	Monk	Jenny Skewes
Highly Commended	Morning has broken	Rhonda Buitenhuis
Highly Commended	Falling apart	Will Hurst
Commended	Family portrait	Rhonda Buitenhuis
Commended	Lavender and wine	Rhonda Buitenhuis
Commended	Old ferry	Ken Anderson
Commended	You looking at me	Will Hurst
Commended	Swinging	Joanne Linton

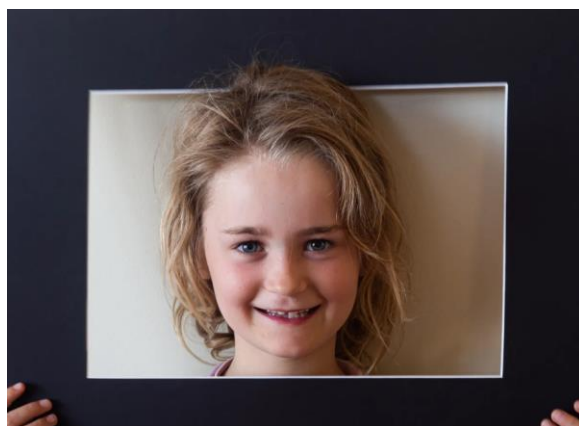
Gary has produced a slideshow of the images which you can view at the following link

<https://www.youtube.com/watch?v=A8PMhMBt8ws>

Some of the images below have been cropped slightly. It is recommended the full-size images are viewed on the slideshow on YouTube.



Rhonda Buitenhaus: Family portrait
Commended



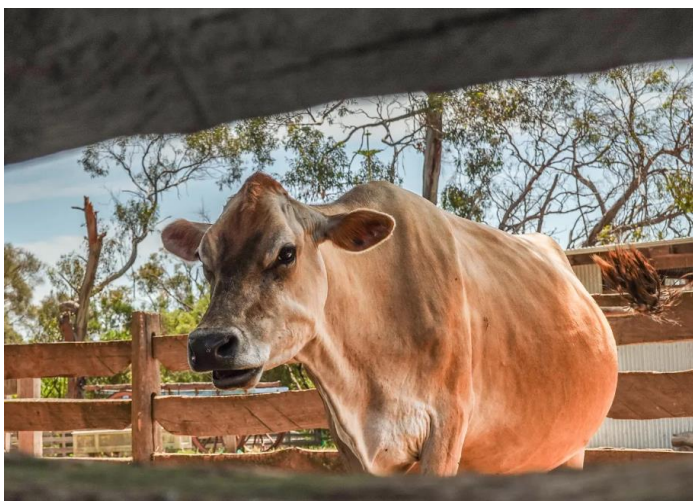
Jenny Skewes: In the frame
Highly commended



Ken Anderson: Old ferry
Commended



Will Hurst: Falling Apart
Highly commended



Will Hurst: You looking at me
Commended



Kathryn Shadbolt: Watching the mast
Highly commended



**Rhonda Buitenhaus: Lavender and wine
Commended**



**Jenny Skewes: Monk
Highly commended**



**Jenny Skewes: Swinging
Commended**



**Joanne Linton: Down the Pathway
Highly Commended**



**Rhonda Buitenhaus: Morning has broken
Highly Commended**

See the next page for the judge's comments.

Phillip Island Monthly Club Competition – Judge Feedback for - Feb 2022 –

Subject – Framed - Judge - Paul Lucas

*Please refer to Judge Instruction Letter for ratings: **HC** (Highly Commended) - **C** (Commended)*

Sequence by Title	Member No	Title	Judge Rating	EDPI
1	361	Abel Home Tasmania		Framed, good DOF, a little “flat” improved using P/shop Haze Removal. Low visual impact against other entries.
2	770	Acropolis		Sharp, good lighting, exposure & DOF. Nice image but POF in frame at bottom of image not dominant.
3	487	Arched window		Framed, sharp, good lighting & exposure. “Straightening” using P/shop would improve impact.
4	770	Cockatoo island		Framed, displays mood of an era. Sharp, good lighting, exposure & DOF. But what is the POF – the lovely wall or the scene through the window?
5	866	Distant boat		Mood with excellent lighting, exposure and sharp DOF. Trees & rocks create partial frame but they only partially add a POF to the boat in the distant scene.
6	487	Down the pathway	HC	Impact. Sharp with great lighting, exposure & DOF. Frame highlights pathway leading into the POF scene. No Distractions (ND). Fills the frame (FTF).
7	601	I see you		Impact. Sharp. A little “flat” that would improve by using P/shop Haze Removal.
8	601	Lazy afternoon		Sharp, good lighting, exposure & DOF. Nice scene. Unfortunately, the framing is very large around the edge of the photo and does not contribute to focussing the viewer on the POF.
9	601	Watching the mast	HC	Impact. Mood. Framed. Sharp, good lighting, exposure & DOF. ND.
10	601	James		B & W suits. Unfortunately, a little “flat” which is improved using P/shop Shadows/Highlights. Crop RHS and a little of LHS to focus viewer on scene.
11	431	Family portrait	C	Lovely scene with great expressions creates mood. Sharp, good lighting, exposure & DOF. Just sufficient “frame” to make viewer focus on the scene.
12	641	Flower Godess		Good DOF. Only partial frame to concentrate focus on the subject. A little flat that improves by using P/shop Levels.

Sequence by Title	Member No	Title	Judge Rating	EDPI
13	326	Glen Forbes Hall		Sharp, good lighting, exposure & DOF. Perfect framing with path leading to the house. Unfortunately, just not quite the impact of other entries. Close to an award. FTF.
14	770	Glimpse		Sharp, good lighting, exposure & DOF. Era of wall creates a mood. Unfortunately, the wall dominates the viewer's focus rather than pointing the focus to the distant scene through the wall. FTF.
15	399	Granite		Sharp, good lighting, exposure & DOF. Trees create partial framing but unfortunately the rocks have low POF impact against other images entered.

16	399	In the frame	HC	Impact. Innovative framing. Sharp, good lighting, exposure & DOF. Eye flash. Pleasing expression. ND.
17	641	Keppel Creek		Framed with good DOF. A little flat improved by using P/shop Levels. Scene not as high impact as other entries.
18	431	Lavender and wine	C	Impact. Nice scene creates mood. Sharp, good lighting, exposure & DOF. ND. FTF.
19	487	Looking up		Sharp, good lighting, exposure & DOF. Innovative with lines & angles. Less is More (LIM) ND. FTF. Just not quite the impact of other entries.
20	399	Monk	HC	Impact. Sharp, good lighting, exposure & DOF. Story. Mood. ND. FTF. Great POF.
21	431	Morning has broken	HC	Impact. Sharp, good lighting, exposure & DOF. Lighting creates a Mood. ND. FTF. LIM. Subtle framing with tree branches.
22	641	My self		Excellent innovative framing. Good lighting and exposure. Unfortunately, the low DOF means the subject's face is in soft focus.
23	866	Old ferry	C	Impact. Sharp, good lighting, exposure & DOF creates a mood. Reasonable framing. Reflection adds. Cropping some of LHS & RHS would add focus on the ferry.
24	431	Peek a boo		Nice expression but unfortunate the eyes are closed. Off-centre in frame adds. A little flat that could be improved using P/shop Levels. Cropping the LHS would create a more uniform frame.

Sequence by Title	Member No	Title	Judge Rating	EDPI
25	447	Falling Apart	HC	Impact. Sharp, good lighting, exposure & DOF. Frame suits and perfectly focuses the viewer's eye on the distant scene to create a nice mood. ND.
26	447	You looking at Me	C	Impact. Sharp, good lighting, exposure & DOF. Interesting framing suits. Eye flash. ND. Cow on a nice angle.
27	770	Ruins		Sharp, good lighting, exposure & DOF. Framed by trees suits. ND. FTF. Just not as good impact as other entries.
28	326	Smoko Time		Distant fields nicely framed but unfortunately, a minor POF in whole image. Spoon, cup, & rail being in soft focus unfortunately distracts.
29	399	Swinging	C	Sharp, good lighting, exposure & DOF. Nice expression. Framed. FTF. Cropping some of bottom would remove distraction of her top and add to focus on the face.
30	487	Time out		Sharp, good lighting, exposure & DOF. Nice scene well framed. Unfortunately, the woman on the RHS looking out of photo distracts.

Phillip Island Monthly Club Competition – Judge Feedback for - Feb 2022 –

Subject – Framed - Judge - Paul Lucas

*Please refer to Judge Instruction Letter for ratings: **HC** (Highly Commended) - **C** (Commended)*

Sequence by Title	Member No	Title	Judge Rating	EDPI
31	326	Ubirr		Framed. POF unfortunately a little flat that could improve using P/shop Levels to add impact,
32	866	Woolshed falls		Sharp, good lighting, exposure & DOF. Nice scene with mood but frame is not highly evident. Trees distract.
33	326	Work in progress		Sharp, good lighting, exposure & DOF The POF of the field is minor in the image. Foreground of field distracts. Unfortunately, the frame using the excavator dominates the viewer's attention and becomes the main POF

WHAT YOU NEED TO KNOW ABOUT SUBMITTING IMAGES FOR EVALUATION

DIGITAL IMAGES (EDI):

- Images may either be created with a digital camera or created with a conventional camera and scanned into electronic format.
- Images may be enhanced or manipulated using image editing software, but the original image must have been made by the entrant.
- As per VAPS specifications (www.vaps.org.au), maximum horizontal dimension is 1920 pixels and the maximum vertical dimension is 1080 pixels.
- Each image file must be in sRGB JPEG format and a maximum of up to 5 Mb in size (5000kb).

Name your data image with Title of photo and your Club member number, separated by an underscore, followed by the topic and month when the judge will present the images to the members at the monthly meeting eg: **Sunset on Woolamai Beach_126_Open_Feb2022.**

Maximum of four entries in total either in PRINTS, EDPI or a combination of the two.

NOVICE CATEGORY REINSTATED:

To encourage new members to participate in the monthly evaluation, it has been decided to re-instate a NOVICE section. This will be in the EDPI (Electronic Digital Projected Image (I think I've got that right.)) format. We would like to emphasise that this is not a competition but a learning opportunity. If you need assistance to get started please speak to one of the Committee Members, who are only too happy to help. Maximum of four entries.

Label your entries NOV_(Title)_(PICC Number)_Topic_Month2020

EDPIs can be forwarded to parnellg@yahoo.com

ARE WE HAVING PRINTS?

We have introduced Prints again for the Evaluation Topic in 2022 (COVID permitting). A total of four images only can be entered into the evaluation. Four prints or four EDPIs or a combination prints/EDPIs totalling four.

When entering prints, we ask that an EDPI of the Print be entered also as our plan is to have the Prints displayed but to show them in the slide-show so that everyone can see the detail on screen. It is important that Print EDPIs be labelled with PRINT e.g. **PRINT_Title of image_Membership No_Open 202_Feb2022**

Please bring the actual PRINT along to the Newhaven Yacht Club on the day of the meeting for it to be displayed for the judge's final perusal and for members to view.

PRINTS

- Prints may be ANY size, up to a maximum of 40cm x 50cm (16in x 20in) when mounted.
- ALL prints MUST be mounted.
- Panoramic print formats are acceptable, but must fit on a 40cm x 50cm (16in x 20in) board.
- Prints mounted to a total thickness greater than 5mm will not be accepted.
- Please also include a digital image of the photo you send in labelled as for the EDPI, but starting with **PRINT: e.g. PRINT_Sunset on Woolamai Beach_126_Open_July2018**

NEWSLETTER ITEMS If you wish to contribute to the monthly newsletter please send items to Lorraine Tran at tranlorraine@gmail.com

Please help make this newsletter informative for everyone.