

# PHILLIP ISLAND CAMERA CLUB INC: NOVEMBER 2022



**Meetings:** 1<sup>st</sup> Monday of the month 1.30 - 4pm (Easter & Cup weekend exceptions)

**Website:** <http://www.phillipislandcameraclub.com.au>

**Facebook Page:** <https://www.facebook.com/groups/382689165127848>

**YouTube:** <https://youtube.com/channel/UCCPK8oUGGI0C2xRY2OhFOyg>

**Enquiries:** Jenny – [phillipislandcameraclub@gmail.com](mailto:phillipislandcameraclub@gmail.com)

## CALENDAR DATES FOR YOUR DIARY

The following is a list of the proposed dates for Camera Club functions so that you can pencil them into your diary. Please check our Facebook page or your emails for any changes due to weather or other unforeseen circumstances.

Date	Function	Date	Function
12 <sup>th</sup> November	Newhaven Yacht Club Opening Day, PICC members invited to attend and take photographs for NYC.	Monday 5 <sup>th</sup> December	Christmas lunch from 12 noon followed by General Meeting at Newhaven Yacht Squadron Clubrooms commencing 1:30 pm (afternoon tea – BYO cup and gold coin donation).
14 <sup>th</sup> November	Forrest Caves excursion from 6:30pm. RSVP to Graeme <a href="mailto:graeme.lawry@gmail.com">graeme.lawry@gmail.com</a> or 040 709 2352	8 <sup>th</sup> January	'Open' Images for judge's evaluation to Gary.
17 <sup>th</sup> November	RSL Social Lunch at 12:00pm RSVP by 16 <sup>th</sup> Nov. to Lorraine <a href="mailto:tranlorraine@gmail.com">tranlorraine@gmail.com</a> or text 041 933 1630	5 <sup>th</sup> February	'Historic buildings' images for judge's evaluation and monthly challenge images 'Night photography' to Gary.
25 <sup>th</sup> November	Astro Photography with Darryl Whitaker from 6:30pm at Kitty Miller Bay (details in this newsletter). RSVP to James Millward <a href="mailto:james.millward@hotmail.com">james.millward@hotmail.com</a> 043 945 9206	6 <sup>th</sup> February	PICC General Meeting at Newhaven Yacht Squadron Clubrooms commencing 1:30 pm (afternoon tea – BYO cup and gold coin donation).
Sunday 4 <sup>th</sup> December	Monthly Challenge 'Shallow depth of field' images to Gary.	14 <sup>th</sup> February	Excursion to Blue Lotus Water Garden, Yarra Junction and Cement Creek Californian Redwood Forest, Warburton East. RSVP to James Millward <a href="mailto:james.millward@hotmail.com">james.millward@hotmail.com</a> 043 945 9206

## WELCOME TO OUR NEW MEMBER

Welcome to our new member, Margaret Laurie. Margaret attended our October meeting after hearing about our club from her neighbour, Will. Margaret came along to our Tarwin Lower Cemetery orchid photography and Bunurong Drive Inverloch to Cape Patterson photography excursion on October 8<sup>th</sup> and we look forward to seeing more of her at our meetings, workshops and excursions.

We welcome you to PICC Margaret, and hope you enjoy developing skills in photography as well as the friendship of club members.

## **2023 SYLLABUS**

Descriptions for each topic will be emailed to members and available on the PICC website.

Month	Submission date (to Gary) and topic for judge's evaluation	Date of meeting and evaluation of images by the judge	Monthly Challenge (submitted the day before the scheduled meeting)
January	8 <sup>th</sup> Open	No meeting	No meeting
February	5 <sup>th</sup> Historic building	6 <sup>th</sup> Open	Night photography
March	5 <sup>th</sup> Open	6 <sup>th</sup> Historic building	Back Lit
April	2 <sup>nd</sup> Sports of all sorts	3 <sup>rd</sup> Open	Close up
May	30 <sup>th</sup> April Open	1 <sup>st</sup> Sports of all sorts	Then and now
June	4 <sup>th</sup> Floral arrangement	5 <sup>th</sup> Open	Red
July	2 <sup>nd</sup> Open	3 <sup>rd</sup> Floral arrangement	My backyard
August	6 <sup>th</sup> Drained in colour	7 <sup>th</sup> Open	Layering
September	3 <sup>rd</sup> Open	4 <sup>th</sup> Drained in colour	Decay
October	1 <sup>st</sup> Speed, fast shutter	2 <sup>nd</sup> Open	Fungi
November	5 <sup>th</sup> Portfolio	13 <sup>th</sup> Speed, fast shutter	Self portrait
December		4 <sup>th</sup> Portfolio	10-minute challenge

## **PHOTO SUBMISSION CHANGES**

The number of submissions for the evaluation has been revised to three per month. A maximum of three images in total can be submitted in the two categories (EDI and print).

If an image does not receive Highly Commended, it can be submitted into only one more club evaluation. This allows the maker to adjust the image following the judge's recommendations.

## **MONTHLY CHALLENGE FOR DECEMBER MEETING – SHALLOW DEPTH OF FIELD**

### **Due to Gary on Sunday 4th December**

Shallow depth of field refers to an effect where very little of the image is in focus. For instance, an image might include an in-focus subject, but have a blurred-out background.

[https://www.google.com/search?q=Shallow+depth+of+field&rlz=1C5CHFA\\_enAU825AU825&sxsrf=AOaem\\_vKYWpEoDo0EOk6A0VkaxT-kwqWjzA:1635835788104&source=lnms&tbn=isch&sa=X&ved=2ahUKEwjN272Yi\\_nzAhVA8HMBHYGSAY0Q\\_AUoAXoECAEQAw&biw=1298&bih=956&dpr=1.8](https://www.google.com/search?q=Shallow+depth+of+field&rlz=1C5CHFA_enAU825AU825&sxsrf=AOaem_vKYWpEoDo0EOk6A0VkaxT-kwqWjzA:1635835788104&source=lnms&tbn=isch&sa=X&ved=2ahUKEwjN272Yi_nzAhVA8HMBHYGSAY0Q_AUoAXoECAEQAw&biw=1298&bih=956&dpr=1.8)

<https://digital-photography-school.com/understanding-depth-field-beginners/>

<https://expertphotography.com/20-tips-shallow-depth-of-field/>

<https://shotkit.com/shallow-depth-of-field-photography/>

## **NOVEMBER MONTHLY CHALLENGE – CONTRASTING COLOURS**

Thanks to all who submitted contrasting colours images. A small selection of the images is below. Go to <https://www.youtube.com/watch?v=T1tbK30-z4k> for a slideshow of images on YouTube.

Thanks to Gary for compiling the slideshow.



## **VALE PAST MEMBERS OF THE CLUB – VAL POLMEAR AND NOEL MAXWELL**

By Rob McKay

**Val Polmear** would have been one of the longest serving members of the club. She joined within the first five years of the club's formation and served for a brief time on the committee but was more noted for working silently in the background.

I spent several days teaching Val the basics of Photoshop, which she grasped and exploited in her work.

Val's work was outstanding. She concentrated on shooting along the beach, finding patterns and shapes among rocks, seaweed and driftwood.

Val has not been to the club for a few years now and I regret not visiting her in recent years.

**Noel Maxwell** was a real trier in his photography. His personality won everyone over. He did some great work but he could not comprehend photographic editing. A couple of us members spent some time with Noel going through the basics of editing in small editing programs and even trying to show him Photoshop.

I can remember Noel being very elated when one of his images took out first place in the club evaluations.

There was nothing we could do to encourage Noel and three or four years ago, Noel did not renew his membership.

Both will be sadly missed.

## **EXCURSIONS AND WORKSHOPS**

### *Newhaven Yacht Club Opening Day 12th November*

Members of PICC are invited to attend the Newhaven Yacht Club Opening (of the Season) Day. A briefing will be held at 1:30pm, followed by the yachts sailing past shortly after that. Entertainment and refreshment will be held afterwards in the clubhouse. It is hoped that PICC members will be able to provide images as a record of the day to the yacht club as a way of saying 'thank you' for allowing us to use the clubhouse for our meetings.

### *Forrest Caves Excursion 14<sup>th</sup> November*

An excursion will be held at Forrest Caves on Monday 14<sup>th</sup> November. Please meet in the Forrest Caves Car Park at 6:30pm. Please wear strong non-slip walking shoes, warm clothing (if required) and bring your camera, tripod and insect repellent. Please RSVP Graeme Lawry [graeme.lawry@gmail.com](mailto:graeme.lawry@gmail.com) or 040 709 2352 and if attending, please watch emails or our Facebook page for cancellation if the weather is not suitable.

### *RSL Social lunch 17<sup>th</sup> November*

A social lunch will be held at the Cowes RSL on Thursday 17<sup>th</sup> November, not 15<sup>th</sup> as previously advertised. (RSL is not open on Tuesdays.) Please RSVP to Lorraine by 16<sup>th</sup> November [tranlorraine@gmail.com](mailto:tranlorraine@gmail.com) or text 041 933 1630.

### *Astro photography with Darryl Whitaker 25<sup>th</sup> November*

An Astro Photography workshop will be held on Friday 25<sup>th</sup> November. Please meet in the car park at Kitty Miller Bay at 6:30pm. We will take the right-hand side path off the car park, down the set of stairs to the beach. Please bring: camera and widest-angle lens you've got, tripod, walking shoes, insect repellent and a warm jacket. Please RSVP to James Millward [james.millward@hotmail.com](mailto:james.millward@hotmail.com) or 043 945 9206 if you plan to attend and watch email notifications and our Facebook page in case the workshop is called off due to cloud cover or poor weather conditions.



## *Blue Lotus Water Garden and Cement Creek Californian Redwood Forest 14<sup>th</sup> February*

A day trip to the Blue Lotus Water Garden at 2628 Warburton Highway, Yarra Junction will be held on 14<sup>th</sup> February. Here, lotus ponds, banana trees and giant Amazon waterlilies can be seen in a manicured setting with bridges and sculptures. Lunch can be brought with you or purchased at the café.



*Images by Lorraine taken at the Blue Lotus Water Garden.*

Participants will continue on to the Californian Redwood Forest (15 minutes out of Warburton), Cement Creek Road, East Warburton where majestic Redwood trees growing up to 55 metres tower into the sky. Details for car pooling meeting times will be available later.

## *Mansfield trip in 2023*

A trip to stay at Mansfield is planned from 10<sup>th</sup> – 13<sup>th</sup> October 2023 – partners are welcome. Please start thinking about sharing a cabin or if you wish to book your own camp site. Further details published later. For details contact Ken Anderson [ken02407@gmail.com](mailto:ken02407@gmail.com)

## **EXHIBITIONS**

### *Leongatha Rotary Club 2023 Art and Photography Show 14<sup>th</sup> January – 4<sup>th</sup> February*

Closing date for entries to this art and photography show is 14th December 2022 using the online entry form. The show will be held at the Leongatha Memorial Hall on the corner of McCartin Street and Michael Place in Leongatha. Opening hours are from 10:00am – 4:00pm Monday to Sunday. Opening night is Friday 13<sup>th</sup> January. Photographic Awards in 2022 included Best Monochrome Photo (\$300), Best Colour Photo (\$300) Best Digitally Modified Photo (\$300). For more details, go to <https://www.leonartshow.com.au/>

### *Carinya Aged Care Framed Photos*

Only a small number of framed images were collected at the November meeting. If you wish to exhibit your images at Carinya please bring them along to the December meeting. Please include in the corner of the frame on a piece of paper or tag: name of image, your name, email address, price (if for sale).

## PICC AND NEWHAVEN RESIDENTS GROUP CALENDAR

Thanks to all members who contributed to the 2023 calendar. 100 copies were printed, of which 34 were purchased by PICC members. Apart from recognition of our club in the community, a small portion of the funds raised from sales will go back to the club.

### EVALUATION OF OPEN IMAGES

Thank you to judge Paul Robinson who was the evaluator for the October/November Abstract topic.

Well done to all who submitted images for judging. There were 4 Highly Commended and 7 Commended Awards.

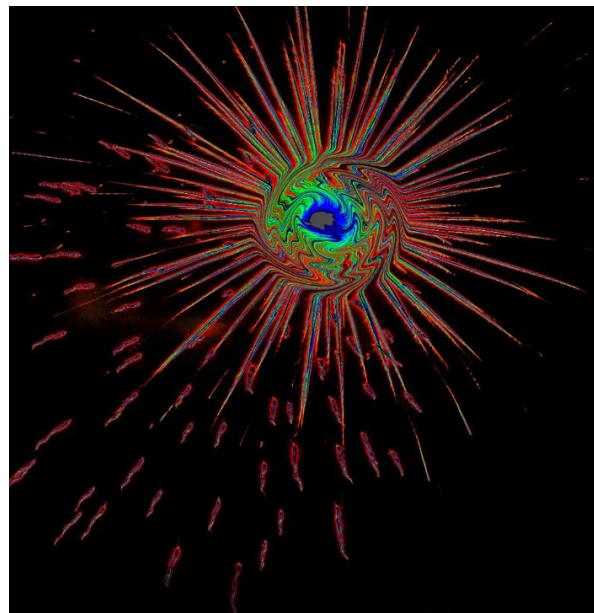
AWARD	TITLE	PHOTOGRAPHER
Highly Commended	Mandala	Susan McLauchlan
Highly Commended	Meyegrain	Rob McKay
Highly Commended	Twiggy	Rhonda Buitenhaus
Highly Commended	Weather map	Will Hurst
Commended	My garden	Colleen Johnston
Commended	Floral moon	Rob McKay
Commended	Fountain Turmoil	Ken Anderson
Commended	Ghostly	Jenny Skewes
Commended	Grid	Jenny Skewes
Commended	Shimmer	Brenda Berry
Commended	Waterlily weave	Rhonda Buitenhaus

A selection of the Highly Commended and Commended images is shown below. Note that some of the images are slightly cropped. Viewing of the images is recommended on the YouTube slideshow

<https://www.youtube.com/watch?v=9Lj91NW6B4k> and <http://www.phillipislandcameraclub.com.au/galleries/> (for the commended and highly commended images).



**Mandala: Susan McLauchlan**  
**Highly commended**



**Meyegrain**  
**Highly commended**





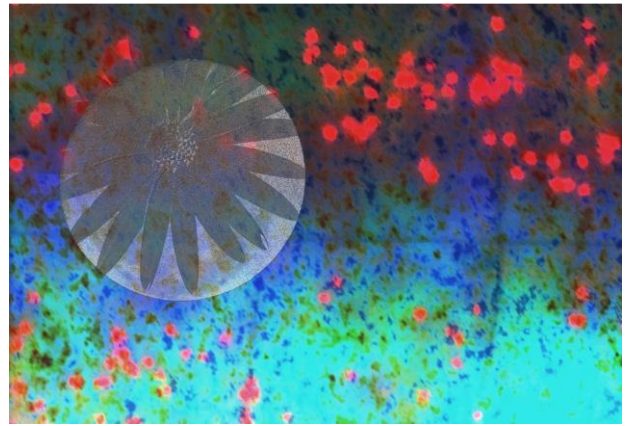
**Twiggy: Rhonda Buitenhaus**  
Highly commended



**Weather Map: Will Hurst**  
Highly commended



**My Garden: Colleen Johnston**  
Commended



**Floral moon: Rob McKay**  
Commended



**Fountain turmoil: Ken Anderson**  
Commended

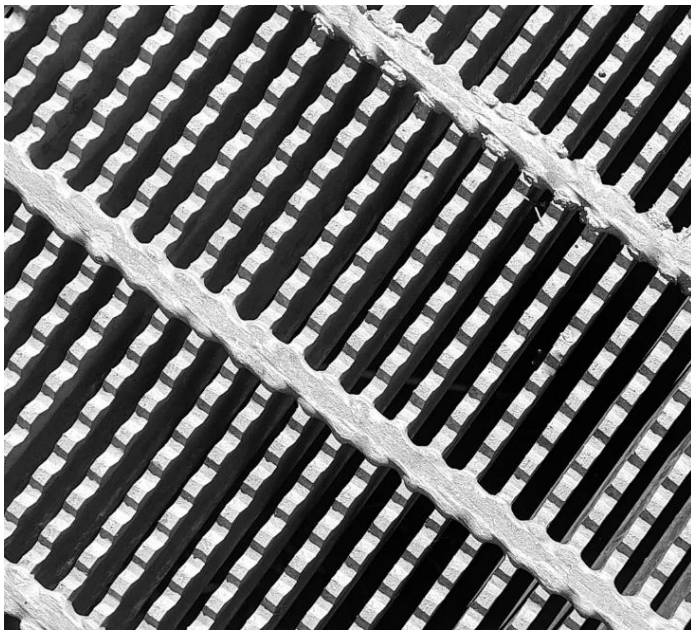


**Ghostly: Jenny Skewes**  
Commended





**Shimmer: Brenda Berry**  
Commended



**Grid: Jenny Skewes**  
Commended



**Waterlily weave: Rhonda Buitenhaus**  
Commended

## **WHAT YOU NEED TO KNOW ABOUT SUBMITTING IMAGES FOR EVALUATION**

### **DIGITAL IMAGES (EDI):**

- Images may either be created with a digital camera (including a mobile phone camera) or created with a conventional camera and scanned into electronic format.
- Images may be enhanced or manipulated using image editing software, but the original image must have been made by the entrant.
- As per VAPS specifications ([www.vaps.org.au](http://www.vaps.org.au)), maximum horizontal dimension is 1920 pixels and the maximum vertical dimension is 1080 pixels.
- Each image file must be in sRGB JPEG format and a maximum of up to 5 Mb in size (5000kb).



Name your data image with Title of photo and your Club member number, separated by an underscore, followed by the topic and month when the judge will present the images to the members at the monthly meeting eg: **Sunset on Woolamai Beach\_126\_Open\_Feb2022**.

Maximum of **three** entries in total either in PRINTS, EDPI or a combination of the two.

## **NOVICE CATEGORY REINSTATED:**

To encourage new members to participate in the monthly evaluation, it has been decided to re-instate a NOVICE section. This will be in the EDPI (Electronic Digital Projected Image format. We would like to emphasise that this is not a competition but a learning opportunity. If you need assistance to get started please speak to one of the Committee Members, who are only too happy to help. Maximum of three entries.

Label your entries NOV\_(Title of image)\_(PICC membership number)\_Topic\_Month2020

EDPIs can be forwarded to [parnellg@yahoo.com](mailto:parnellg@yahoo.com)

## **ARE WE HAVING PRINTS?**

We have introduced prints again for the evaluation topics in 2022. A total of **three** images only can be entered into the evaluation. **Three** prints or **three** EDPIs or a combination prints/EDPIs totalling **three** can be submitted. The exception to this is the Folio topic, where a combination of four prints or four EDPIs or a combination of prints/EDPIs can be submitted.

When entering prints, we ask that an EDPI of the print be entered also as our plan is to have the prints displayed but to show them in the slide-show so that everyone can see the detail on screen. It is important that print EDPIs be labelled with PRINT e.g. **PRINT\_Title of image\_Membership No\_Open 202\_Feb2022**

Please bring the actual print of the image along to the Newhaven Yacht Club Clubroom on the day of the meeting for it to be displayed for the judge's final perusal and for members to view.

## **PRINTS**

- Prints may be ANY size, up to a maximum of 40cm x 50cm (16in x 20in) when mounted.
- ALL prints MUST be mounted.
- Panoramic print formats are acceptable, but must fit on a 40cm x 50cm (16in x 20in) board.
- Prints mounted to a total thickness greater than 5mm will not be accepted.
- Please also include a digital image of the photo you send in labelled as for the EDPI, but starting with **PRINT: e.g. PRINT\_Sunset on Woolamai Beach\_126\_Open\_July2018**

Please note: If an image does not receive Highly Commended, it can be submitted into only one more club evaluation. This allows the maker to adjust the image following the judge's recommendations.

## **NEWSLETTER ITEMS**

If you wish to contribute to the monthly newsletter, please send items to Lorraine Tran at [tranlorraine@gmail.com](mailto:tranlorraine@gmail.com)

Please help make this newsletter informative for everyone.

**Phillip Island Monthly Club Competition – Judge Feedback for October 2022**  
**Subject: Abstract Judge: Paul Robinson**

*Please refer to Judge Instruction Letter for ratings: **HC** (Highly Commended) - **C** (Commended)*

Sequence by Title	Member No	Title	Judge Rating	EDPI
1	361	Blue Mood		Similar to Cyanotype photography with a Gothic feel. See Anna Atkins (England). Search 'Gothic Landscape Photography'.
2	361	Dancing Poppy		Fluid akin to a flying butterfly. Excellent brightness contrast.
3	361	My Garden	C	Good example of abstract. Geometric shapes as an art element.
4	377	Abstract figure		Use of line treatment (Hatching & cross hatching). Cold/warm & size contrast.
5	487	Fire tree		Use of line treatment (contour lines). Negative space appropriately used.
6	431	Flight		Use of line (Hatching) via panning. Diagonals imply action/motion.
7	377	Floral moon	C	Use of formal (geometry) and informal (colour splatter) in contraposition.
8	866	Fountain turmoil	C	Floating, flowing and informal. See Minor White (USA)
9	399	Ghostly	C	Complementary colours working well. Ethereal quality. See Frances Seward (USA).
10	399	Grid	C	Linear crosshatch with diagonal to imply motion in a static subject. See Paul Strand (USA).
11	870	Hand held		Grain provides mood and B&W is experimental. Great viewpoint.
12	487	Lakeside stop		Treatment akin to stencil artwork approach.
13	869	Mandala	HC	High quality representation. Spiritual blue to happiness yellow.
14	377	Meyegrain	HC	Sharp points represent danger as does red. Black enhances the brilliance of all colours. Similar shape to a Monstrance implying a spiritual quality here.
15	399	Mysterious lights		Bokeh approach with cool regal colours.
16	870	Ouch		Strong graphical quality. Humorous title.
17	447	PRINT - Swirl		Spiral with double complementary colours – Black/White & Violet/Yellow.



## Phillip Island Monthly Club Competition – Judge Feedback for October 2022

**Subject: Abstract    Judge: Paul Robinson**

*Please refer to Judge Instruction Letter for ratings: **HC** (Highly Commended) - **C** (Commended)*

Sequence by Title	Member No	Title	Judge Rating	EDPI
18	884	PRINT - Cactus		Crystalline pattern with background emphasis on free-flowing organic form.
19	884	PRINT – Fruits of the sea		Good visual texture – more contrast! Seaweed sufficiently well-hidden to encourage interpretation.
20	884	PRINT - Stepping stones		Geometric asymmetric pattern. Depressive effect with upper dark blue. See Ola Kolehmainen (Finland).
21	875	Reflections		Metallic feel. Try increasing saturation.
22	641	Rust		Organic shapes work well and the title shifts thought away from its realism.
23	866	Sea glass		Worn glass has become smoky. Depth of field!!
24	641	Shimmer	C	Jackson Pollock approach. More saturation may help.
25	487	Silent watchers		Appearance of solarisation. Stepped tonal range.
26	866	Stairs		Fibonacci spiral giving a radial composition.
27	641	Super nova		Radial composition. Increasing saturation, brightness and contrast will make it 'pop'.
28	431	Twiggy	HC	Looks like Islamic that is complex with Mandalas and grid pattern.
29	431	Waterlily weave	C	Excellent use of line flow and overlapping for depth. Complementary colours. See Patrick Rochon (USA).
30	447	Weather map	HC	Great title. Akin to Drip Art a sub-set of abstract art. Fluid colour. See Cliff Briggie (USA).