

PHILLIP ISLAND CAMERA CLUB INC: JULY 2023



Meetings: 1st Monday of the month 1.30 - 4pm (**Easter & Cup Day weekend exceptions**)

Website: <http://www.phillipislandcameraclub.com.au>

Facebook Page: <https://www.facebook.com/groups/382689165127848>

YouTube: <https://youtube.com/channel/UCCPK8oUGGI0C2xRY2OhFOyg>

Enquiries: Jenny – phillipislandcameraclub@gmail.com

CALENDAR DATES FOR YOUR DIARY

The following is a list of the proposed dates for Camera Club functions so that you can pencil them into your diary. Please check our Facebook page or your emails for any changes due to weather or other unforeseen circumstances.

Date	Function	Date	Function
6 th August	Drained in colour images for judge's evaluation and for the monthly challenge Layering images are due to be emailed to Gary parnellg@yahoo.com	24 th August	Excursion to Royal Botanic Gardens Cranbourne, meet at Newhaven Yacht Club car park for car-pooling at 9:15am or meet at entrance to gardens at 10:30am. RSVP to Lorraine on 041 933 1630 by 22 nd August.
7 th August	PICC General Meeting at Newhaven Yacht Squadron Clubrooms commencing 1:30 pm (afternoon tea – BYO cup and gold coin donation). Lunch prior to meeting is at the Vietnam Vets Museum Café. RSVP to Lorraine by text 041 933 1630 or email tranlorraine@gmail.com by Friday 4 th August.	Monday 4 th September	PICC Annual General Meeting at 1:30pm at Newhaven Yacht Club. Please nominate for the committee.
17 th August	Social lunch at 12 noon at the Phillip Island RSL, Cowes. Partners are welcome. RSVP to Graeme Lawry on 0407 092 352 by Monday 14 th August.	8 th September	Excursion to Wywurri Inverloch, RSVP Jenny 0408 355 130.
		10 - 13 th October	Mansfield 4 days/3 nights excursion.

2023 SYLLABUS

Descriptions for each topic have been emailed to members and are available on the PICC website.

Month	Submission date to Gary and topic for judge's evaluation	Date of meeting and evaluation of images by the judge	Monthly Challenge (submitted the day before the scheduled meeting)
August	6 th Drained in colour	7 th Open	Layering
September	3 rd Open	4 th Drained in colour	Decay
October	1 st Fast shutter speed	2 nd Open	Fungi
November	5 th Portfolio	13 th Speed, fast shutter	Self portrait
December		4 th Portfolio	10-minute challenge

PHOTO SUBMISSIONS

Please note that 'Drained in colour' images (for judge's evaluation) and 'Layering' (monthly challenge) should to be emailed to Gary Parnell parnellg@yahoo.com by Sunday 6th August. (Please see definitions below.)

The number of submissions for the evaluation has been revised to three per month. A maximum of three images in total can be submitted in the two categories (EDI and print).

If an image does not receive Highly Commended, it can be submitted into only one more club evaluation. This allows the maker to adjust the image following the judge's recommendations.

DEFINITION OF TOPICS

Topic for judge's evaluation: Drained in colour (desaturation of colour)

Desaturation of colour lies somewhere between colourful and monochrome; not necessarily black and white but very muted tones.

References

<https://helpx.adobe.com/au/photoshop-elements/key-concepts/saturation-desaturation.html>

<https://digital-photography-school.com/step-by-step-how-to-make-a-moody-desaturated-image-in-lightroom/#:~:text=The%20purpose%20of%20desaturated%2C%20or,an%20underlying%20sense%20of%20brooding>

<https://petapixel.com/2017/03/06/simple-guide-desaturated-urban-look-lightroom/>

<https://www.flickr.com/photos/ricko19/albums/72157623776488028/>

Monthly challenge: Layering

Layering is what adds the illusion of three dimensions to flat, two-dimensional photographs. To add this illusion to our images is sometimes the easiest thing in the world, because it happens by accident! The scene is naturally layered.

References

<https://luminousjourneys.net/irreverent-photog-blog/fun-w-layering-your-images/#:~:text=In%20simple%20terms%20layering%20is,The%20scene%20is%20naturally%20layered.>

<https://fujilove.com/using-layers-to-enhance-your-photography/>

<https://parkerphotographic.com/how-to-use-layering-in-photography/>

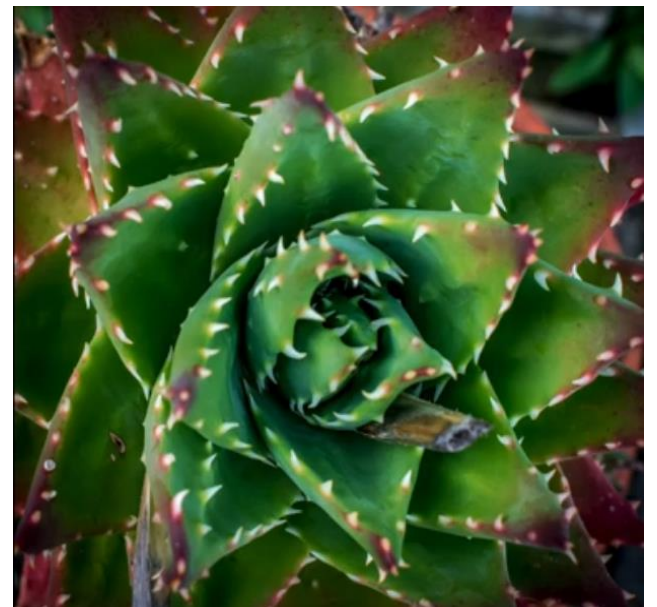
<https://www.picsofasia.com/tutorial/4-benefits-of-using-layers-in-photography/>

<https://digital-photography-school.com/beginners-introduction-using-layers/>

JULY MONTHLY CHALLENGE – MY BACKYARD

Thanks to all who submitted My backyard images for the Monthly Challenge. A small selection of the images appears below. Thanks to Gary for putting together the My backyard images on a YouTube video that can be viewed at

https://www.youtube.com/watch?app=desktop&fbclid=IwAR32Z5GJuH2S6J-YJa-0rVKogAQOfxpGWUBkINep6TCura2Fd0nRJ17rnA&v=6Ufu-LQd_Zo&feature=youtu.be



EXCURSIONS AND WORKSHOPS

Please note that sign-up sheets will be available at the monthly meetings if you wish to attend excursions and workshops. If you wish to participate in an activity, please add your name to the list or let the organiser of the activity know you wish to participate.

Participants should have provided close contact details to Brenda or Jenny if you intend to participate. This information is needed if a participant becomes ill or has an accident.

The following excursions are in the planning stages. Dates and times to be confirmed.

- 13th November (mid afternoon TBC), Nobbies to Penguin Parade back road RSVP Graeme 0407 092 352
- Cadillac Canyon February 2024
- Cape Liptrap 2024
- Know your camera workshop/Beginners Photography course TBA

Social Lunch

The next social lunch will be held at the RSL on Thursday 17th August at 12noon. If you (and your partner) wish to attend the social lunch please RSVP to Graeme Lawry (if your name is not already on the list) on 0407 092 352 by 14th August.

Royal Botanic Gardens Cranbourne

The Royal Botanic Gardens Cranbourne offers a natural bushland experience alongside the award winning contemporary spectacular Australian Garden. It celebrates the beauty and diversity of Australian landscapes and flora, featuring over 100,000 plants from 1,900 plant varieties. Please RSVP to Lorraine by 22nd August on 041 933 1630 by text. If you wish to car pool, please meet at the Newhaven Yacht Club car park at 9:15am, on 24th August or meet at the entrance of the gardens at 10:30am, situated at Ballarto Road and Botanic Drive Cranbourne 3977. Please note that there is currently roadworks in the area, so there may be diversions in place.

Wywurri flower farm

This excursion to Jenny's flower farm (between Wonthaggi and Inverloch) will be held on Friday 8th September. This is a great opportunity to take some close up and macro images. RSVP to Jenny on 0408 355 130.

Mansfield trip in October, 2023

A 4-day/3-night excursion to Mansfield is planned from 10th – 13th October 2023 – partners are welcome. Please start thinking about sharing a cabin or if you wish to stay at a camp site at Mansfield Holiday Park. Estimated cost for shared cabin accommodation is \$65 - \$75 each per night. Powered sites are approximately \$40 and unpowered \$35.

Costs will be firmed up once numbers of participants and sharing arrangements are known. To receive a discount for our accommodation, we will need to book through the club. We are hoping to arrange a workshop or talk by a local photographer during our stay. For details contact Graeme Lawry (0407 092 352) or Lorraine Tran (041 933 1630) who have now taken over the organisation of the trip. Thanks to Ken Anderson for the initial planning work he did for this excursion.

Astro Workshop – Lake Glenmaggie

Report and images by James Millward

A super fun and informative night was had on Friday 23rd June by all attendees! Thank you to Gary Parnell for organising the excursion and especially to John Gwyther and his wife Marg for opening their home to us, hosting and instructing the participants. It was only a single night away, but really felt like a whole weekend. John had prepped us prior to arriving with copious notes on selecting lens, aperture and shutter speeds. The weather wasn't looking very promising, with solid cloud, having rained on and off most of the day. On arriving we were welcomed by John and Marg before being shown to our rooms. We then went out and set up our cameras on our tripods before leaving them in John's hanger and returning to the house. Nibbles and drinks were consumed while we waited for it to turn dark. We were very fortunate – the cloud lifted and we were blessed with an amazing display of the Milky Way and an abundance of stars.

I took a couple of camera bodies and lenses with me, but decided to concentrate on using my 7.5mm F2.8 iso 1600, M4/3 Lens with my Olympus OM-D-E-m1 MKII. I set my camera up to take 25 second exposures @ f2.8 in groups of 6, 28 seconds apart. The maximum length of exposure is calculated by using the 500 rule, (500 / the focal length of the lens), this is the maximum exposure length that you can use without the stars blurring. I took a number of sets, plus a set of 'Dark Shots' (basically the same camera settings but with the lens cap on). The evening's shooting finished around 10pm as the clouds once again started rolling in.

The following morning, we were greeted with a hearty cooked breakfast, cooked by John, followed by a demonstration of how to process the images we had captured. John demonstrated how to use a stacking software called Sequator, which is free to download and use. By stacking multiple images, it's possible to reduce the noise from images and produce a cleaner image. The Dark Shots are used to help cancel out the noise that the camera creates when taking a long exposure.

On leaving Lake Glenmaggie, we headed to the Glenmaggie Dam wall for some more photo opportunities. Some of us then travelled to the quaint gold mining township of Walhalla for a late lunch and some more photos. Finally arriving home at just before 6pm on Saturday tired, but with a number of images to view and process.

The images below are a selection of processed single shots and stacked images.



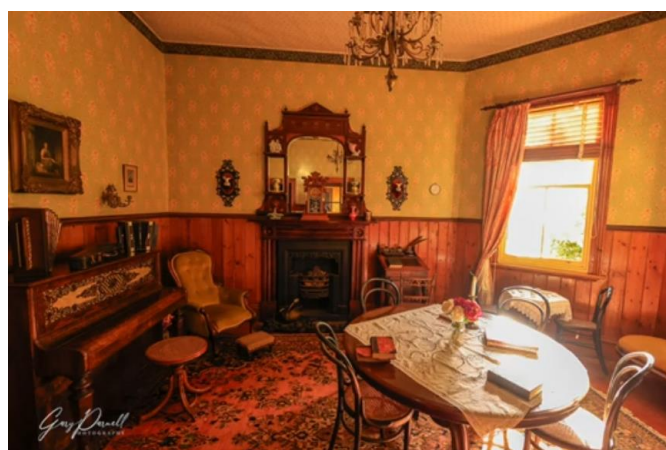
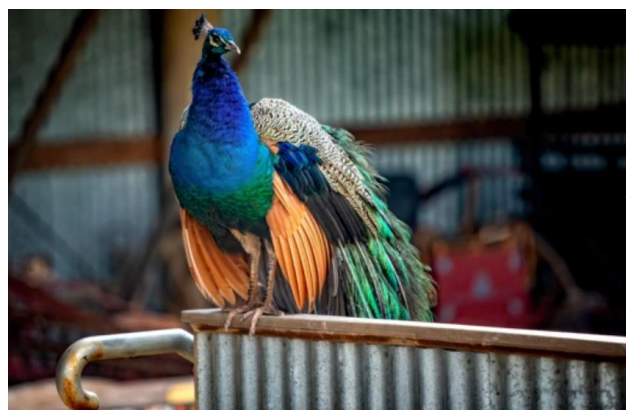
Thanks again to Gary who not only organised the Astro workshop but also collected images and prepared a video of it.

https://www.youtube.com/watch?app=desktop&fbclid=IwAR1FiSYihOb4pF7_37IS9_dT2_QcssQGjT9fRUj9Z3OUqTEhxmijh9yv5C0&v=DSnBR9Tyxmk&feature=youtu.be

Churchill Island excursion

Thanks to Jenny for organising the excursion to Churchill Island and to those who came along. Unfortunately, the weather was not great, but the sun did shine for a short while. We spend time in the café having a cuppa, huddled around the warm fire, then ventured out to wander along the paths or paid a visit to the farm and homestead and garden.

Thanks to Gary who prepared a YouTube video of the excursion which is available for you to view at https://www.youtube.com/watch?app=desktop&fbclid=IwAR1Z6oKgxsqcXTCejUvG0EYiu4l6IAwfxb-duFMoI5lACnD9sp1Mbl0tB_A&v=FUI_4ziw1JU&feature=youtu.be



EXHIBITIONS AND COMPETITIONS

Our Vice President, Rob McKay attended the VAPS 69th Interclub Competition held at the Colac Otway Performing Arts and Cultural Centre from 16th – 18th June. Congratulations to all of those members who entered their work. The following list shows the results of the **print** images for our club.

Title of image	Member	Score
Black Lillies	Colleen Johnston	11
Boat Shed Cradle Mountain	Lynne Cook	12
Busselton Jetty	Susan McLauchlan	10
Busy	Jenny Skewes	14
Chinese Lantern	Will Smith	10
Damsel Fly	Ken Anderson	12
Falling Apart	Will Hurst	10
Fresh	Rhonda Buitenhaus	15
Kilcunda Sunrise	Susan McLauchlan	10
Old Woody	James Millward	8
Osprey	Graeme Lawry	9
Otways Waterfall	Kenneth Anderson	9
Sea Lion	Robert McKay	13
Sisters	Rhonda Buitenhaus	13
SS Speke	James Millward	9

The Club Aggregate (Top 10) scores for Print was 120. The club scoring the highest aggregate was Geelong Camera Club with 136. Our score was equal 20th of the 39 clubs that gained a score for the print section.

The following list shows the results of the **EDPIs**.

Title of image	Member	Score
A Painterly Double Bass	Lynne Cook	9
Bedraggled	Rhonda Buitenhaus	8
Goose Family	Jenny Skewes	8
Herded in	Robert McKay	7
Marina Morning	Ken Anderson	11
Orb Spider	Kathryn Shadbolt	7
Princess Pier	Judith Meier	11
Stilt	Graeme Lawry	9
The Marina	Gary Parnell	10
The Marker	Judith Meier	9
Tidal Tree	Ken Anderson	8
Water Lilly	Joanne Linton	7
Weather Map	Will Hurst	8
Weathered on the Beach	Lorraine Tran	9
Whats for Dinner	Gary Parnell	9

The Club Aggregate (Top 10) scores for EDPIs was 93. The club scoring the highest aggregate was Rosanna Camera Club with 121. Our score was 45th of the 46 clubs that gained a score for the EDPIs.

The following is a message from Rob McKay.

Due to the disappointing results of our club in the EDI interclub, I am forwarding a link to show the standard of entries that were submitted to the 2021 Vigex EDI Salon.

Vigex is the Victorian Exhibition of photography that is run as a print salon on even years and a digital salon on the odd years.

It is recommended that you have a look at the images to get a feel of what others are doing in photography.

https://vigex.org.au/2021_Digital/2021gallery/gallery.html

Gippsland Interclub Photographic Exhibition

East Gippsland Photographic Society is hosting the 2023 Gippsland Interclub Exhibition. The exhibition will be held at the East Gippsland Art Gallery, 2 Nicholson Street, Bairnsdale and will be open from Friday 4th August until Saturday 2nd September. The official opening will be from 5:30 – 7:30pm on Friday 4th August. There will be a social weekend following the opening. Clubs will need to organise their own accommodation.

Thanks to the following members who submitted images for the Gippsland Interclub Photographic Exhibition.

Title of image	Photographer/member	Location
Save Western Port Woodlands – Good Friday 2023	Renee Stirling	Grantville
Lapwing	Graeme Lawry	Cowes Beach
Hibiscus	Colleen Johnston	Cowes Golf Club
Fine Dining	Ken Anderson	Avonleigh Farm Fine Food, Tarwin
Sisters	Rhonda Buitenhuis	Newhaven
Cattle Egret	Robert McKay	Cowes
Eagles Nest	James Millward	Inverloch
Bee	Jenny Skewes	Rhyll
Trestle Bridge Still Standing	Jon Hogan	Nojee
Hay Bales Long Dry Summer	Jon Hogan	Warragul

(Supplied by Rob McKay)

All images have now been framed ready for delivery to Warragul where they will be judged. There will be a judging panel of three independent and diversly qualified judges set up by the hosting club. The Roy Berryman Certificate is awarded to the maker of the winning image. Also awarded is the Winning Club Perpetual Banner. The winning club is determined by totalling the points awarded to the ten entries for each club. Additional points are allocated accordingly – 1st place x 5 points, 2nd place x 4 points, 3rd place x 3 points, merit x 2 points.

EVALUATION OF FLORAL ARRANGEMENT IMAGES

Thank you to judge Paul Lucas, evaluator for the July 'Floral Arrangement' topic. Well done to all who submitted images for judging. There were 5 Highly Commended and 5 Commended Awards.

AWARD	TITLE	PHOTOGRAPHER
Highly Commended	Abstract	Joanne Linton
Highly Commended	Not so fresh now	Rhonda Buitenhuis
Highly Commended	Orchids n Daisies	Lynne Cook
Highly Commended	Plastic Fantastic	Ken Anderson
Highly Commended	Two frogs	Joanne Linton
Commended	Oh Oleander	Rhonda Buitenhuis
Commended	Tropical Bowl	Joanne Linton
Commended	Tulip Trio	Colleen Johnston
Commended	Winter red and green	Kathryn Shadbolt
Commended	Yellows	Jenny Skewes

A selection of Open images awarded Highly Commended and Commended appear below. Some of the images have been cropped. Please go to the following link to see all the images:

<https://www.youtube.com/watch?app=desktop&v=6C3MjV3MQKE&fbclid=IwAR13oaBqxFL7P-7hDjRDKilv8qIxQsECYOWPjZzr8JAGTNpH6RVZ3eMdf8g>



Abstract: Joanne Linton
Highly commended



Not so fresh now: Rhonda Buitenhaus
Highly commended



Orchids n Daisies: Lynne Cook
Highly commended



Plastic fantastic: Ken Anderson
Highly commended



Two frogs: Joanne Linton
Highly commended



Oh Oleander: Rhonda Buitenhaus
Commended



Yellows: Jenny Skewes
Commended



Tropical bowl: Joanne Linton
Commended



**Winter red and green: Kathryn Shadbolt
Commended**



**Tulip trio: Colleen Johnston
Commended**

WHAT YOU NEED TO KNOW ABOUT SUBMITTING IMAGES FOR EVALUATION DIGITAL IMAGES (EDI):

- Images may either be created with a digital camera (including a mobile phone camera) or created with a conventional camera and scanned into electronic format.
- Images may be enhanced or manipulated using image editing software, but the original image must have been made by the entrant.
- As per VAPS specifications (www.vaps.org.au), maximum horizontal dimension is 1920 pixels and the maximum vertical dimension is 1080 pixels.
- Each image file must be in sRGB JPEG format and a maximum of up to 5 Mb in size (5000kb).

Name your data image with Title of photo and your Club member number, separated by an underscore, followed by the topic and month when the judge will present the images to the members at the monthly meeting eg: **Sunset on Woolamai Beach_126_Open_Feb2022.**

Maximum of **three** entries in total either in PRINTS, EDPI or a combination of the two.

NOVICE CATEGORY REINSTATED:

To encourage new members to participate in the monthly evaluation, it has been decided to re-instate a NOVICE section. This will be in the EDPI (Electronic Digital Projected Image format. We would like to emphasise that this is not a competition but a learning opportunity. If you need assistance to get started please speak to one of the Committee Members, who are only too happy to help. Maximum of three entries.

Label your entries NOV_(Title of image)_(PICC membership number)_Topic_Month2020

EDPIs can be forwarded to parnellg@yahoo.com

ARE WE HAVING PRINTS?

We have introduced prints again for the evaluation topics in 2022. A total of **three** images only can be entered into the evaluation. **Three** prints or **three** EDPIs or a combination prints/EDPIs totalling **three** can be submitted. The exception to this is the Folio topic, where a combination of four prints or four EDPIs or a combination of prints/EDPIs can be submitted.

When entering prints, we ask that an EDPI of the print be entered also as our plan is to have the prints displayed but to show them in the slide-show so that everyone can see the detail on screen. It is important that print EDPIs be labelled with PRINT e.g. **PRINT_Title of image_Membership No_Open 202_Feb2022**

Please bring the actual print of the image along to the Newhaven Yacht Club Clubroom on the day of the meeting for it to be displayed for the judge's final perusal and for members to view.

PRINTS

- Prints may be ANY size, up to a maximum of 40cm x 50cm (16in x 20in) when mounted.
- ALL prints MUST be mounted.
- Panoramic print formats are acceptable, but must fit on a 40cm x 50cm (16in x 20in) board.
- Prints mounted to a total thickness greater than 5mm will not be accepted.
- Please also include a digital image of the photo you send in labelled as for the EDPI, but starting with **PRINT: e.g. PRINT_Sunset on Woolamai Beach_126_Open_July2018**

Please note: If an image does not receive Highly Commended, it can be submitted into only one more club evaluation. This allows the maker to adjust the image following the judge's recommendations. **Please see next page for the judge's evaluations.**

CONGRATULATIONS

Congratulations to Ken Anderson for gaining a Highly Commended (Single Shot) in Capture Magazine Australasia's Top Emerging Photographers Award 2023 for his image Pyramid Rock Point, which was taken at sunrise. A great shot! Well done, Ken.



Congratulations also to Renee Stirling, who will be exhibiting her photography with 10 other members of the Melbourne Camera Club. The exhibition titled *Visual Foray* is at the Wolfhound Gallery in Fitzroy and runs throughout July. Renee is showing six images from the *World That Never Stops Moving* portfolio which is part of a larger body of work called *Travelling at the Speed of Light* with a central theme of the energy that underpins all existence. If you'd like to read more about Renee's work, please go to <https://reneesterling.com.au/news/>

Phillip Island Monthly Club Competition – Judge Feedback for July 2023

Subject: Floral Arrangement Judge: Paul Lucas

*Please refer to Judge Instruction Letter for ratings: **HC** (Highly Commended) - **C** (Commended)*

Sequence by Title	Member No	Title	Judge Rating	EDPI
1	487	Abstract	HC	Impact. Innovative modern composition of a mass of various plants purposely arranged in a random pattern that creates a mood. Great lighting, depth of focus and exposure. Background suits. Radiating arrangement adds. Base adds with fungi as well as fungi in the arrangement. Fills the frame with no distractions.
2	866	Dried Bits & Pieces		Lovely lighting, exposure and focus of a simple arrangement. Imaginative variety of plants on a slant angle that adds softness. Background suits and not distracting. Innovative base to arrangement but unfortunate it is “chopped off” as it distracts.
3	653	Flower show arrangement 1		Great lighting, depth of focus and exposure of a range of plants in peak condition. Background suits. Nice balance of colour but the cropped image unfortunately prevents the full pattern of the arrangement from being seen.
4	653	Flower show arrangement 2		Great lighting, depth of focus and exposure. Nice casual arrangement of the flowers and colours adds. Background slightly distracting. A pity some of the side flowers are cropped as it diminishes the overall visual impact.
5	361	Geranium Posy		Great lighting, depth of focus, exposure and composition add mood. Background suits with no distractions. Plant at peak. Water droplets add. Very close to getting an award.
6	326	Ginger		Lovely lighting, exposure and focus. The various flowers and foliage at their peak are nicely arranged. Unfortunately, the left-hand side background distracts reducing the overall visual impact.
7	325	Nice		Good lighting. Nice composition with the container adding to the scene. It is unfortunate the rest of the flower arrangement is not visible. Low depth of focus as rear flowers not sharp.
8	431	Not so fresh now	HC	Impact. Wonderful lighting adds mood to the scene of dry plants. Great composition with no background distractions. Debris on the ground adds. Container shape and type adds. Fills the frame.
9	431	Oh Oleander	C	Impact. Black and white suits and creates mood. Great composition with nice lighting. Vignette background suits with no distractions. Container and cloth arrangement on a slant around the base add. Soft focus of cloth keeps the eye on the sharp focus of flowers.

Phillip Island Monthly Club Competition – Judge Feedback for July 2023

Subject: Floral Arrangement Judge: Paul Lucas

*Please refer to Judge Instruction Letter for ratings: **HC** (Highly Commended) - **C** (Commended)*

Sequence by Title	Member No	Title	Judge Rating	EDPI
10	431	Once were poppies		Black and white suits this simple imaginative scene and adds mood. Great lighting with vignette adding. Sharp. No distractions. Story – what were the flowers like at their peak?
11	326	Orchids n Daisies	HC	Impact. Classic Horticultural composition with varying foliage adding. Flowers and foliage at peak. Great lighting, sharpness, and exposure. Background suits with no distractions. Story? – a gift for what with card in the arrangement and plastic bag used for delivery still there. Pity label remaining on container not cloned out – but a minor point!
12	601	Petals and Gum Leaves		Good lighting, sharpness, and exposure. Slant to flowers adds softness. Fills the frame. Pity the bottom flower is not in peak shape like the top one.
13	866	Plastic fantastic	HC	Impact. The great lighting and colour add to the wonderful mood. Nice composition that fills the frame with no distractions. Soft pink plant adds softness. The 2 items at the base add interest.
14	326	Pretty in Pink		Good lighting, exposure and sharp. Vignette adds. Unfortunately, the background dark shadow distract and add a slant to the composition. Plants at peak. A pity the paper covers the bottom flower.
15	447	PRINT – everlasting daisies & Pinball Hakea		Great lighting, exposure and sharpness. Simple arrangement of 3 varieties of colourful flowers at their peak in virtual triangular shaping adds. Background with slight shadows adds depth while not distracting.
16	447	PRINT – Protea and Banksias		Excellent lighting, sharpness and exposure of a range of radiating plants at peak. Centred red protea adds. Background shadows add extra depth while not distracting. Nice display of 2 banksia plants at completely different length but unfortunately this distracts from a nicely balanced composition of the arrangement.
17	325	Purple		Good lighting. Nice balanced radiating arrangement. Slightly soft focus actually adds mood. Background adds with no distractions. Container adds.
18	361	Sunflowers		Excellent lighting, sharpness and exposure of this imaginative arrangement of flowers past their prime that adds mood. 3 flowers in partial triangular arrangement adds. No distractions.

Phillip Island Monthly Club Competition – Judge Feedback for July 2023 Subject: Floral Arrangement Judge: Paul Lucas <i>Please refer to Judge Instruction Letter for ratings: HC (Highly Commended) - C (Commended)</i>				
Sequence by Title	Member No	Title	Judge Rating	EDPI
19	601	Three little maids		Good lighting, focus and exposure of the 3 flowers at their peak. Water droplets add to the mood. A slightly more regular shaping of the flower arrangement would have added to the composition.
20	487	Tropical Bowl	C	Impact. Square format of this lovely round flower arrangement suits. Good lighting and focus. Fills the frame. The very slightly “off-centred” centre piece detracts from gaining a higher rating.
21	361	Tulip Trio	C	Impact. Simple innovative upright arrangement of 3 flowers in great lighting and focus suits and adds to the mood. Flowers at peak. Background suits with no distractions. Fills the frame.
22	487	Two frogs	HC	Impact. Artistic and innovative arrangement. Receding slant adds softness. Overall background adds with no major distractions. Tongue and wasp adds to an imaginative effect. Great lighting and focus.
23	325	Vase		Triangular arrangement adds. Lovely red rose but unfortunately the darkened edges of the rose petals show it is not at peak. Lighting is good on the upper section but darker on the lower rose section. Pity the rose is “looking down”.
24	601	Winter red and green	C	Impact. Great lighting, focus and exposure of an innovative hanging fruit arrangement. Fruit on ground adds. Container shape and colour adds to overall mood. No distractions.
25	399	Yellows	C	Impact. Wonderful radiating floral arrangement with the 3 lower flowers adding a base to the display. Good lighting and focus with no distractions.

NEWSLETTER ITEMS

If you wish to contribute to the monthly newsletter, please send items to Lorraine Tran at tranlorraine@gmail.com

Please help make this newsletter informative for everyone.

Rhonda Buitenhaus provided the following link about AI she thought may be of interest to PICC members.

<https://www.quillandcamera.com/is-ai-generated-art-ethical/>