

PHILLIP ISLAND CAMERA CLUB INC: JUNE 2025



Meetings: 1st Monday of the month 1.30 - 4pm (**Easter & Melbourne Cup Eve are exceptions**)

Website: <http://www.phillipislandcameraclub.com.au>

Facebook Page: <https://www.facebook.com/groups/382689165127848>

YouTube: <https://youtube.com/channel/UCCPK8oUGGI0C2xRY2OhFOyg>

Enquiries: Graeme – phillipislandcameraclub@gmail.com

June 2025 Newsletter

Hello PICC Members

Welcome to the June 2025 Newsletter and welcome to our newest member, Julie Oates; please make sure you say hello to her at the next meeting.

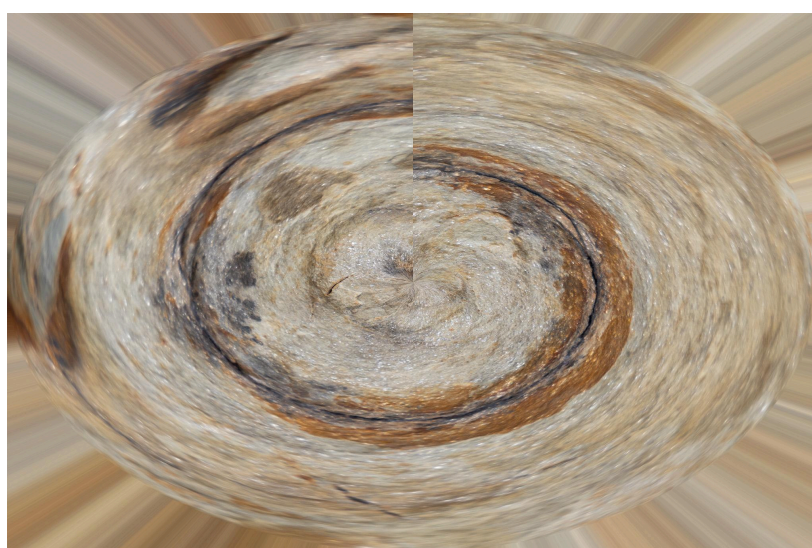
We started the month with a wonderful selection of images evaluated by APJA Judge, Trish McKeown at our General meeting. It was an 'Open' theme and attracted a wide variety of great images. It is heartening to see an increasing number of members, particularly some of our newer members, participating in the evaluations. Please keep it up.

We have several outings and events planned, so please check the dates below and plan for anything that takes your fancy.

In particular, remember the talk we have planned with Craig Wetjen on 3rd August. Details below and I will attach a JPG image to the distribution email, with all details that you can pass onto others. We want as many attendees as possible to make this event successful; you can help that happen by spreading the word.

Happy Snapping – Graeme

“There is no abstract art. You must always start with something. Afterwards you can remove all traces of reality” - Pablo Picasso



- Canon R5, 24mm Polar Coordinates Filter Photoshop

DATES TO NOTE

Monday June 23rd - Warragul Interclub presentation via Zoom 7.30pm zoom link below

Join Zoom Meeting

<https://us02web.zoom.us/j/82501038913?pwd=QaVouNOvWAuNavHr2pT4JFpG2xMk21.1>

Meeting ID: 825 0103 8913

Passcode: 255027

Location:

Note - I am happy to have members over to my home in Cowes to take part in the Zoom presentation. If you would like to join us, please let me know either by phone 0407092352 or email graeme.lawry@gmail.com. If it looks as if we will have too many for our house, we will work out another location.

Tuesday 24th June - Astro Milky Way Shoot. Conservation Hill paddock 6pm; Galactic core should be visible from around 6.40pm NOTE. a second night on Saturday 28th, this has been scheduled in case of bad weather on the 24th, but also to accommodate members who may not be able to get there on the 24th. RSVP to 0407092352

Thursday 26th June - Lunch at Cowes RSL 12.30pm RSVP - Joanne is overseas so please let me know on 0407092352 if you will be coming.

Saturday 28th June - Astro Milky Way Shoot. Conservation Hill paddock 6pm. RSVP to 0407092352

Sunday July 6th - Abstract Challenge images due to Gary Parnell parnellg@yahoo.com (5pm deadline) Info and helpful links later in this newsletter.

Sunday July 6th - Landscape/Seascape Evaluation images due to Gary Parnell parnellg@yahoo.com This evaluation will be handled by a PICC Panel at our August meeting

Monday July 7th - PICC General Meeting 1.30pm Newhaven Yacht Squadron. Lunch before meeting at 12 noon - Vietnam Veteran's Museum Cafe. RSVP to Margaret Laurie on 0425 801 173

Sunday August 3rd - Craig Wetjen presentation at Berninneit. Setup from 12 noon. Please let others in your circle know about this. We will be needing some help to setup on the day and manage light refreshments. If you can help, please let me know on 0407 092 352 or graeme.lawry@gmail.com

This will be suitable for a wide audience and all are welcome. We hope to get a large turnout for this event, so please make sure you spread the word. The more successful this talk is, the more likely we are to get support for further presentations in the future.

This is a Free event but please use either the web link or the QR code (either will work) below to Register, so we can keep track of numbers.

[PICC - Craig Wetjen - Photography Wellness Talk](#)



2025 SYLLABUS

The 2025 syllabus is largely set and is shown below. The intent behind the syllabus is to provide a varied choice of topics that will, hopefully, encourage members to expand their photography skills. We have, within PICC, an incredible range of photographic skill sets that we would like to draw on and share. With that in mind, members are encouraged to participate in our challenges and share their personal photographic passions. Above all, though, enjoy your photography!

Thanks to those of you who have contributed suggested evaluation/challenge topics via our Facebook page. These will be given careful consideration. There are still a couple of gaps in our 2025 syllabus. If you have a particular topic you would like covered in a workshop or talk, please contact Graeme on graeme.lawry@gmail.com

Date	Activity Main activity for the meeting. Evaluation, Workshop or Presenter	Judge (if applicable)	Challenge (image slideshow) Due in day before meeting at latest	Five Minutes of Fame	Brief for next month's challenge Explanation and discussion of next challenge
3 rd February	Evaluation - Open	Johanna Botman	Mobile/Tablet Global edits only		Structure
3 rd March	Workshop Matting		Structure		Sand Patterns
7 th April	Evaluation – Black and White	Jeffrey Nankervis	Sand Patterns		Blue Hour – ‘Blue Hour’ excursion during April
5 th May	Guest Speaker - Erin Marine Photography Talk		Blue Hour		Weather
2 nd June	Evaluation - Open	Trish McEwan	Weather		Abstract
7 st July	Workshop - Focus Bracketing		Abstract		Close Up/Macro
4 th August	Evaluation - Landscape/Seascape	PICC Panel	Close Up/Macro		
1 st September	Workshop/Trick Shots				Trick Shots
6 th October	Evaluation - Open		Trick Shots		
10 th November	Workshop /Presenter				PICC
1 st December	Evaluation (4 image Portfolio) Maker's theme		PICC 2025 Images of PICC members during club outings or activities		

[JUNE Open Evaluation](#)

Thanks to all who participated in our June Open Evaluation

There were some inspired images. I know Trish McKeown, our judge, enjoyed reviewing the submissions.

The Commended and Highly Commended images are shown below.



Colleen Johnston - Frozen_Ti-Tree Commended



Rhonda Buitenhuis - Cradle Mountain Vista - Commended



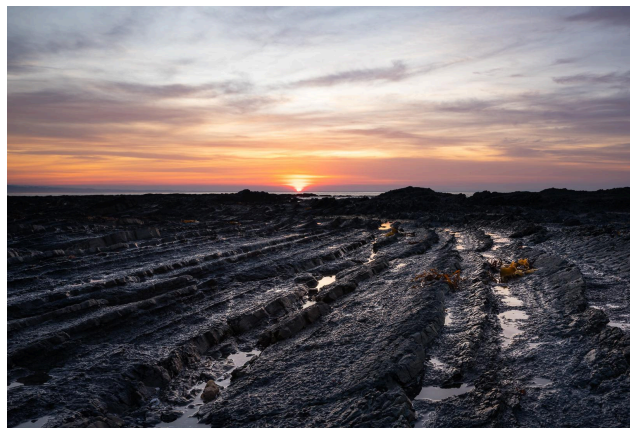
Gary Parnell - Spoonbill in Flight - Highly Commended



Ken Anderson - Damselfly - Highly Commended



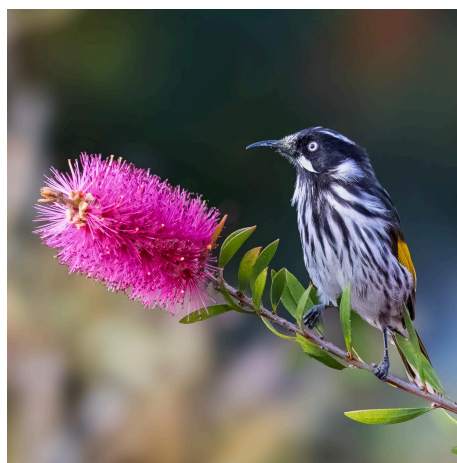
Andrew Keir - Female Red Capped Robin - Commended



Susan McLauchlan - Walkerville Sunrise - Commended



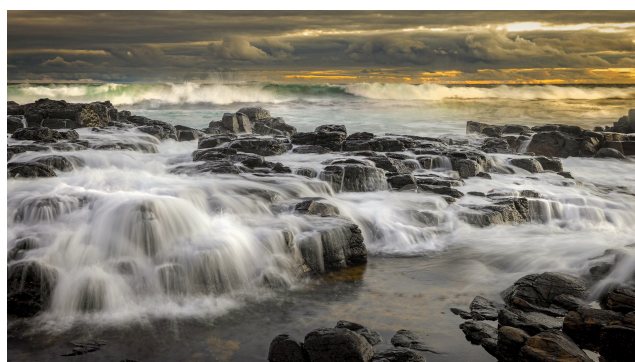
Karen Cashen - Autumn Feels - Commended



Andrew Keir - New England Honey Eater - Commended



Graeme Lawry - Cormorant - Highly Commended



Gary Parnell - The Ocean - Commended

[July Challenge](#)

In our Challenge for the July meeting, we are looking for 'Abstract' images.

A bit daunting and somewhat scary. Just what is an Abstract image ?

There are a myriad of definitions if you look online, but for our purposes, we can go with the following...

"Abstract photography consists of images created using photography materials and equipment that don't have an immediate association with the physical world. Abstract photographers use perspective, movement, and light to transform the world we see into an unexpected, often unrecognizable image"

In general, abstract images should not show as a recognisable object. The images can start off as a standard study, but should finish as an obscure image, perhaps by means of an extreme close up, motion blur or via software manipulation.

You are encouraged to be creative and take an interpretive view of the challenge. Recent challenges have seen some quirky and very creative images; keep them coming.

As always, don't overthink the challenge. We are lenient about your interpretation, we just want to see your images.

Some links that may be helpful.

[Top 10 reasons for taking Abstract Photos](#)

[Tips on Abstract images](#)

[August Landscape/Seascape Evaluation](#)

Don't forget to submit your images for the August Landscape/Seascape evaluation. This evaluation will be handled by a PICC Team Panel at our August meeting.

There has been some discussion about the definition of a Landscape or Seascape. For our purposes, a generic definition found online will suffice...

'A landscape refers to the natural features of a land area, while a seascape specifically depicts the sea, coastline or a view of the sea. Landscapes encompass mountains, forests, rivers etc.' whereas seascapes focus on the sea and its interaction with the land.'

Both Landscapes and Seascapes may include other elements, perhaps manmade objects, or humans, but these elements should not be a major feature or point of focus.

Have fun with the Evaluation; we look forward to seeing your images.

A couple of links that may help you.

[Photopills Seascape Guide](#)

[Mike Smith Landscape Tips](#)

Phillip Island Photo Opportunities Project (PIPO)

Lorraine is continuing to work on the Phillip Island Photo Opportunities project. This project builds on outlines developed by member Mark Davy of locations on Phillip Island (or close by) that club members, locals and visitors to the island may wish to photograph. It describes how to get to each place, the facilities available (such as car parks and toilets) and what can be seen and captured at each location. It also includes safety information (if relevant) and best times for photography. It is planned that PIPO will be published online and will feature photographs taken by our club members to encourage others to take images at the locations of choice.

Thanks to those who have already contributed images to this project. We would like to include your high quality images to showcase as many club members as possible. If you wish to provide images (if you are a newbie) or provide more recent images for existing ones, please send them to Lorraine at tranlorraine@gmail.com.

Please include the location of the image and your PICC membership number when you name the image. E.g. PIPO_(your member number)_(location).

List of locations include:

Berrys Beach

Bore Beach/Potters Hill Road

Cape Woolamai and Reserve

-The Colonnades

-The Pinnacles

Chicory kilns:

-Harbison Road

-Back Beach Road

Corner Tourist Road and Back Beach Road

Churchill Island, Samuel Amess Drive

-Heritage farm/animals

-Walking paths and seascapes

Conservation Hill

Cowes

-Beach

-Cemetery/wetlands

-Esplanade

-Jetty

-Erehwon Point

-Mussel Rocks

Cowrie Beach

Elizabeth Cove Bay and Ventnor

Flynn's Beach

Forrest Caves and Forrest Bluff

Grossard Point

George Bass Coastal Walk

Kitty Miller Bay

Koala Conservation Reserve

National Vietnam Vets Museum

Newhaven

Jetty/Saltwater

-Marina

-Slipways

Oswin Roberts Wildlife Reserve

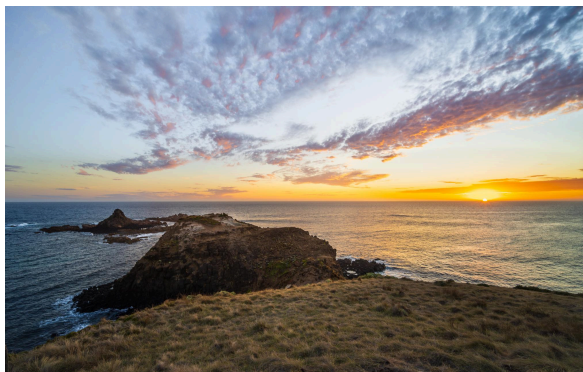
Penguin Reserve and Summerlands Beach

Phillip Island Grand Prix Circuit?
Phillip Island Helicopters?
Point Sambell
Pyramid Rock
Red Rocks Point/Beach
Renison Point
Rhyll
-Inlet
-Jetty
-Boardwalk/Mangroves
-Sculpture
-Reid Bight
San Remo
-Bridge
-Foots beach
-Jetty
-Labyrinth
-Pelicans
Scenic Estate Conservation Reserve
Shelley/Shelly Beach (Cat Bay)
Silverleaves
Smiths Beach
South Coast Road/St. Helen's Road Lookout
Surf Beach and Surfies Point (aka Surfers Point)
Sunderland Bay
Smiths Beach
Swan Lake
The Nobbies
Wreck of the SS Speke
YCW Beach

VAPS NEWSBRIEF

The Victorian Association of Photographic Societies (VAPS) April Newsbrief is available at

[VAPS JUNE Newsletter](#)



A cross between a Landscape and Seascape :-)

WHAT YOU NEED TO KNOW ABOUT SUBMITTING IMAGES FOR EVALUATION

DIGITAL IMAGES (EDI):

Images may either be created with a digital camera (including a mobile phone camera) or created with a conventional camera and scanned into electronic format.

Images may be enhanced or manipulated using image editing software, but the original image must have been made by the entrant.

As per VAPS specifications (www.vaps.org.au), maximum horizontal dimension is 1920 pixels and the maximum vertical dimension is 1080 pixels.

Each image file must be in sRGB JPEG format and a maximum of up to 5 Mb in size (5000kb).

Images should be recent (generally taken within the last 2 years).

Name your data image with Title of photo and your Club member number, separated by an underscore, followed by the topic and month when the judge will present the images to the members at the monthly meeting eg: **Sunset on Woolamai Beach_126_Open_Feb2022**.

Maximum of **three** entries in total either in PRINTS, EDPI or a combination of the two. (Note that the December Portfolio comprises 4 images.)

NOVICE CATEGORY REINSTATED:

To encourage new members to participate in the monthly evaluation, it has been decided to reinstate a NOVICE section. This will be in the EDPI (Electronic Digital Projected Image format. We would like to emphasise that this is not a competition but a learning opportunity. If you need assistance to get started please speak to one of the Committee Members, who are only too happy to help. Maximum of three entries.

Label your entries NOV_(Title of image)_(PICC membership number)_Topic_Month2020

ARE WE HAVING PRINTS?

Prints may be submitted for the evaluation topics in 2025. A total of **three** images only can be entered into the evaluation. **Three** prints or **three** EDPIs or a combination prints/EDPIs totalling **three** can be submitted. The exception to this is the Portfolio topic, where a combination of four prints or four EDPIs or a combination of prints/EDPIs can be submitted.

When entering prints, we ask that an EDPI of the print be entered also as our plan is to have the prints displayed but to show them in the slide-show so that everyone can see the detail on screen. It is important that print EDPIs be labelled with PRINT e.g. **PRINT_Title of image_Membership No_Open_Feb2022**

Please bring the actual print of the image along to the Newhaven Yacht Club Clubroom on the day of the meeting for it to be displayed for the judge's final perusal and for members to view.

PRINTS

Prints may be ANY size, up to a maximum of 40cm x 50cm (16in x 20in) when mounted.

ALL prints MUST be mounted.

Panoramic print formats are acceptable, but must fit on a 40cm x 50cm (16in x 20in) board.

Prints mounted to a total thickness greater than 5mm will not be accepted.

Please also include a digital image of the photo you send in labelled as for the EDPI, but starting with **PRINT: e.g.**

PRINT_Sunset on Woolamai Beach_126_Open_July2018

Images should be recent (generally taken within the last 2 years).

Please note: If an image does not receive Highly Commended, it can be submitted into only one more club evaluation. This allows the maker to adjust the image following the judge's recommendations.